



[Go to Product page](#)

Datasheet for ABIN5662606

## ExcelBand™ All Blue Broad Range Protein Marker

### 1 Image

#### Overview

Quantity:	2 x 250 µL
Detection Range:	10 kDa - 240 kDa
Minimum Detection Limit:	10 kDa
Application:	SDS-PAGE (SDS)

#### Product Details

Purpose:	protein molecular weight marker that range in size from 10 to 240 kDa.
Brand:	ExcelBand™
Characteristics:	The ExcelBand All Blue Broad Range Protein Marker is a blue protein standard with 12 pre-stained proteins covering a wide range of molecular weights from 10 to 240 kDa in Tris-Glycine buffer (9 to 235 kDa in Bis-Tris (MOPS) buffer and Bis-Tris (MES
Components:	Pre-stained protein marker

#### Application Details

Application Notes:	Optimal working dilution should be determined by the investigator.
Comment:	Approximately 0.1~0.5 mg/ml of each protein in the buffer (20 mM Tris-phosphate (pH 7.5), 2% SDS, 0.2 mM DTT, 3.6 M urea, and 15% (v/v) glycerol).
Restrictions:	For Research Use only

#### Handling

Format:	Liquid
---------	--------

## Handling

---

Storage: 4 °C, -20 °C

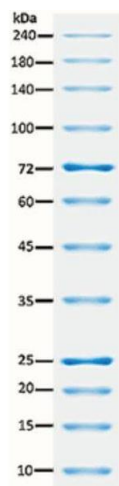
---

Storage Comment: 4°C for 3 months, -20°C for 24 months

---

## Images

---



### SDS-PAGE

Image 1.