

Datasheet for ABIN566264
anti-ATG3 antibody (AA 1-100)



[Go to Product page](#)

1 Image

Overview

Quantity:	50 µL
Target:	ATG3
Binding Specificity:	AA 1-100
Reactivity:	Human
Host:	Mouse
Clonality:	Polyclonal
Conjugate:	This ATG3 antibody is un-conjugated
Application:	Western Blotting (WB), ELISA

Product Details

Purpose:	Mouse polyclonal antibody raised against a partial recombinant APG3L.
Immunogen:	APG3L (NP_071933, 1 a.a. ~ 100 a.a) partial recombinant protein with GST tag.
Sequence:	MQNVINTVKG KALEVAEYLT PVLKESKFKE TGVITPEEFV AAGDHLVHHC PTWQWATGEE LKVKAYLPTG KQFLVTKNVP CYKRCKQMEY SDELEAIIIE
Cross-Reactivity:	Human
Characteristics:	Antibody Reactive Against Recombinant Protein.

Target Details

Target:	ATG3
Alternative Name:	ATG3 (ATG3 Products)

Target Details

Background:	Full Gene Name: ATG3 autophagy related 3 homolog (<i>S. cerevisiae</i>) Synonyms: APG3,APG3-LIKE,APG3L,DKFZp564M1178,FLJ22125,MGC15201,PC3-96
Gene ID:	64422
NCBI Accession:	NM_022488
Pathways:	Autophagy

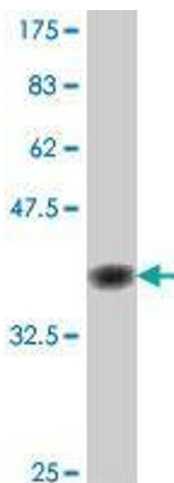
Application Details

Application Notes:	Optimal working dilution should be determined by the investigator.
Restrictions:	For Research Use only

Handling

Format:	Liquid
Buffer:	50 % glycerol
Handling Advice:	Aliquot to avoid repeated freezing and thawing.
Storage:	-20 °C
Storage Comment:	Store at -20°C or lower. Aliquot to avoid repeated freezing and thawing.

Images



Western Blotting

Image 1. Western Blot detection against Immunogen (37.11 kDa).