



[Go to Product page](#)

Datasheet for ABIN566344  
**anti-MMP28 antibody (AA 441-520)**

1 Image

Overview

Quantity:	50 µL
Target:	MMP28
Binding Specificity:	AA 441-520
Reactivity:	Human
Host:	Mouse
Clonality:	Polyclonal
Conjugate:	This MMP28 antibody is un-conjugated
Application:	Western Blotting (WB), ELISA

Product Details

Purpose:	Mouse polyclonal antibody raised against a partial recombinant MMP28.
Immunogen:	MMP28 (NP_077278, 441 a.a. ~ 520 a.a) partial recombinant protein with GST tag.
Sequence:	LARGGLQVEP YYPRSLQDWG GIPEEVSGAL PRPDGSIIFV RDDRYWRLDQ AKLQATTSGR WATELPWMGC WHANSGSALF
Cross-Reactivity:	Human
Characteristics:	Antibody Reactive Against Recombinant Protein.

Target Details

Target:	MMP28
Alternative Name:	MMP28 ( <a href="#">MMP28 Products</a> )

## Target Details

Background:	Full Gene Name: matrix metalloproteinase 28 Synonyms: EPILYSIN,MM28,MMP-28,MMP25
Gene ID:	79148
NCBI Accession:	<a href="#">NM_024302</a>

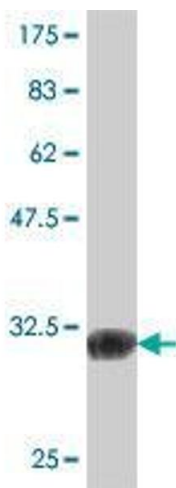
## Application Details

Application Notes:	Optimal working dilution should be determined by the investigator.
Restrictions:	For Research Use only

## Handling

Format:	Liquid
Buffer:	50 % glycerol
Handling Advice:	Aliquot to avoid repeated freezing and thawing.
Storage:	-20 °C
Storage Comment:	Store at -20°C or lower. Aliquot to avoid repeated freezing and thawing.

## Images



### Western Blotting

**Image 1.** Western Blot detection against Immunogen (34.91 kDa).