



[Go to Product page](#)

Datasheet for ABIN566347
anti-IRX6 antibody (AA 337-446)

4 Images

Overview

Quantity:	100 µg
Target:	IRX6
Binding Specificity:	AA 337-446
Reactivity:	Human
Host:	Mouse
Clonality:	Monoclonal
Conjugate:	This IRX6 antibody is un-conjugated
Application:	Western Blotting (WB), ELISA, RNA Interference (RNAi)

Product Details

Purpose:	Mouse monoclonal antibody raised against a partial recombinant IRX6.
Immunogen:	IRX6 (NP_077311, 337 a.a. ~ 446 a.a) partial recombinant protein with GST tag. MW of the GST tag alone is 26 KDa.
Sequence:	PRLTMHYPCL EKPRIWSLAH TATASAVEGA PPARPRPRSP ECRMIPGQPP ASARRLSVPR DSACDESSCI PKAFGNPKFA LQGLPLNCAP CPRRSEPVVQ CQYPSGAEAG
Clone:	1A5
Isotype:	IgG1
Cross-Reactivity:	Human
Characteristics:	Antibody Reactive Against Recombinant Protein.

Target Details

Target:	IRX6
Alternative Name:	IRX6 (IRX6 Products)
Background:	Full Gene Name: iroquois homeobox 6 Synonyms: IRX-3,IRX7,IRXB3
Gene ID:	79190
NCBI Accession:	NM_024335

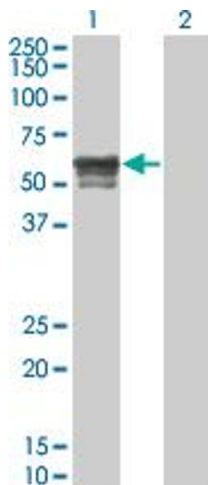
Application Details

Application Notes:	Optimal working dilution should be determined by the investigator.
Restrictions:	For Research Use only

Handling

Buffer:	In 1x PBS, pH 7.4
Handling Advice:	Aliquot to avoid repeated freezing and thawing.
Storage:	-20 °C
Storage Comment:	Store at -20°C or lower. Aliquot to avoid repeated freezing and thawing.

Images

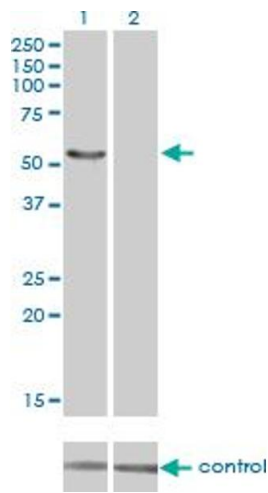


Western Blotting

Image 1. Western Blot analysis of IRX6 expression in transfected 293T cell line by IRX6 monoclonal antibody (M01), clone 1A5.

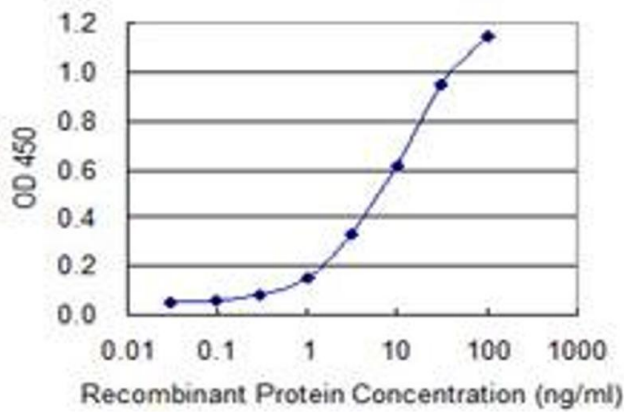
Lane 1: IRX6 transfected lysate(48.169 KDa).

Lane 2: Non-transfected lysate.



Western Blotting

Image 2. Western blot analysis of IRX6 over-expressed 293 cell line, cotransfected with IRX6 Validated Chimera RNAi (Lane 2) or non-transfected control (Lane 1). Blot probed with IRX6 monoclonal antibody (M01), clone 1A5. GAPDH (36.1 kDa) used as specificity and loading control.



ELISA

Image 3. Detection limit for recombinant GST tagged IRX6 is 0.1 ng/ml as a capture antibody.

Please check the [product details page](#) for more images. Overall 4 images are available for ABIN566347.