

Datasheet for ABIN5663646
anti-IGFBP2 antibody (AA 100-200)[Go to Product page](#)

2 Images

Overview

Quantity:	100 µL
Target:	IGFBP2
Binding Specificity:	AA 100-200
Reactivity:	Human
Host:	Rabbit
Clonality:	Polyclonal
Application:	Western Blotting (WB)

Product Details

Immunogen:	A synthetic peptide corresponding to a sequence within amino acids 100-200 of human IGFBP2 (NP_000588.2).
Sequence:	ACGVYTPRCG QGLRCYPHPG SELPLQALVM GEGTCEKRRD AEYGASPEQV ADNGDDHSEG GLVENHVDST MNMLGGGGSA GRKPLKSGMK ELAVFREKVT E
Isotype:	IgG
Cross-Reactivity:	Human, Mouse, Rat
Characteristics:	Polyclonal Antibodies
Purification:	Affinity purification

Target Details

Target:	IGFBP2
---------	--------

Target Details

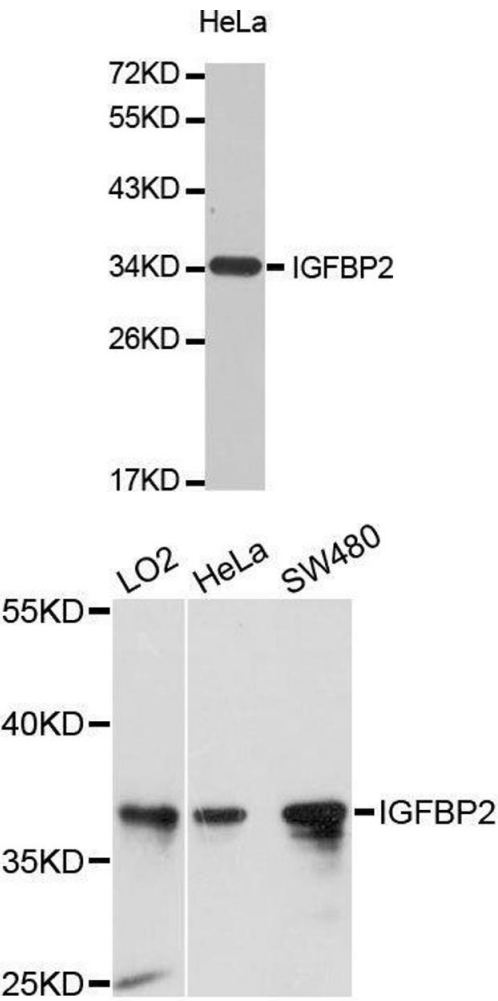
Alternative Name:	IGFBP2 (IGFBP2 Products)
Background:	The protein encoded by this gene is one of six similar proteins that bind insulin-like growth factors I and II (IGF-I and IGF-II). The encoded protein can be secreted into the bloodstream, where it binds IGF-I and IGF-II with high affinity, or it can remain intracellular, interacting with many different ligands. High expression levels of this protein promote the growth of several types of tumors and may be predictive of the chances of recovery of the patient. Several transcript variants, one encoding a secreted isoform and the others encoding nonsecreted isoforms, have been found for this gene.,IGFBP2,IBP2,IGF-BP53,Cancer,Invasion and Metastasis,Signal Transduction,Cell Biology & Developmental Biology,Extracellular Matrix,Growth factor,Insulin and insulin-like,IGFBP2
Molecular Weight:	34 kDa
Gene ID:	3485
UniProt:	P18065
Pathways:	Myometrial Relaxation and Contraction , Growth Factor Binding , Activated T Cell Proliferation

Application Details

Application Notes:	WB,1:500 - 1:2000
Restrictions:	For Research Use only

Handling

Buffer:	PBS with 0.02 % sodium azide,50 % glycerol, pH 7.3.
Preservative:	Sodium azide
Precaution of Use:	This product contains Sodium azide: a POISONOUS AND HAZARDOUS SUBSTANCE which should be handled by trained staff only.
Storage:	-20 °C
Storage Comment:	Store at -20°C. Avoid freeze / thaw cycles.



Western Blotting

Image 1.

Western Blotting

Image 2. Western blot analysis of extracts of various cell lines, using IGFBP2 antibody.