

Datasheet for ABIN566368 anti-SMC6 antibody (AA 1-110)



[Go to Product page](#)

4 Images

1 Publication

Overview

Quantity:	100 µg
Target:	SMC6
Binding Specificity:	AA 1-110
Reactivity:	Human
Host:	Mouse
Clonality:	Monoclonal
Conjugate:	This SMC6 antibody is un-conjugated
Application:	Western Blotting (WB), ELISA

Product Details

Purpose:	Mouse monoclonal antibody raised against a partial recombinant SMC6L1.
Immunogen:	SMC6L1 (AAH39828, 1 a.a. ~ 110 a.a) partial recombinant protein with GST tag. MW of the GST tag alone is 26 KDa.
Sequence:	MAKRKEENFS SPKNAKRPRQ EELEDFDKDG DEDECKGTTL TAAEVGIIES IHLKNFMCHS MLGPFKFGSN VNFVVGNNGS GKSAVLTALI VGLGGRAVAT NRGSSLKGFV
Clone:	2E6
Isotype:	IgG2a
Cross-Reactivity:	Human
Characteristics:	Antibody Reactive Against Recombinant Protein.

Target Details

Target:	SMC6
Alternative Name:	SMC6 (SMC6 Products)
Background:	Full Gene Name: structural maintenance of chromosomes 6 Synonyms: FLJ22116,FLJ35534,SMC6L1
Gene ID:	79677

Application Details

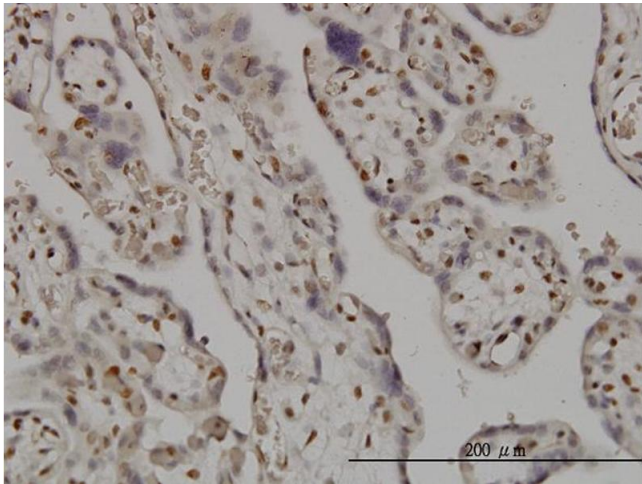
Application Notes:	Optimal working dilution should be determined by the investigator.
Restrictions:	For Research Use only

Handling

Buffer:	In 1x PBS, pH 7.4
Handling Advice:	Aliquot to avoid repeated freezing and thawing.
Storage:	-20 °C
Storage Comment:	Store at -20°C or lower. Aliquot to avoid repeated freezing and thawing.

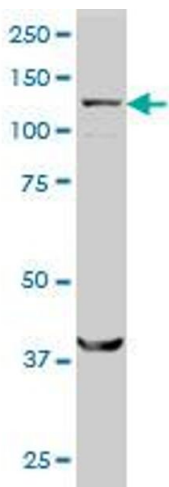
Publications

Product cited in:	Gallego-Paez, Tanaka, Bando, Takahashi, Nozaki, Nakato, Shirahige, Hirota: "Smc5/6-mediated regulation of replication progression contributes to chromosome assembly during mitosis in human cells." in: Molecular biology of the cell , Vol. 25, Issue 2, pp. 302-17, (2014) (PubMed).
-------------------	--



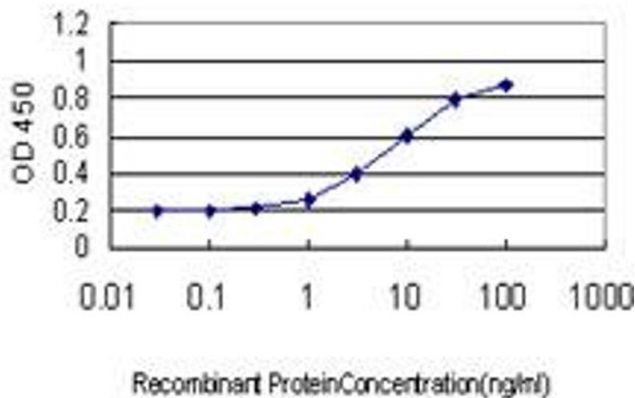
Immunostaining

Image 1. Immunoperoxidase of monoclonal antibody to SMC6L1 on formalin-fixed paraffin-embedded human placenta. [antibody concentration 3 ug/ml]



Western Blotting

Image 2. SMC6L1 monoclonal antibody (M01), clone 2E6 Western Blot analysis of SMC6L1 expression in HeLa .



ELISA

Image 3. Detection limit for recombinant GST tagged SMC6L1 is approximately 0.3ng/ml as a capture antibody.

Please check the [product details page](#) for more images. Overall 4 images are available for ABIN566368.