



[Go to Product page](#)

Datasheet for ABIN5663731
anti-GRB10 antibody (AA 1-100)

2 Images

Overview

Quantity:	100 µL
Target:	GRB10
Binding Specificity:	AA 1-100
Reactivity:	Human
Host:	Rabbit
Clonality:	Polyclonal
Conjugate:	This GRB10 antibody is un-conjugated
Application:	Western Blotting (WB)

Product Details

Immunogen:	A synthetic peptide corresponding to a sequence within amino acids 1-100 of human GRB10 (NP_005302.3).
Sequence:	MALAGCPDSF LHPYQDKV EQTPRSQQDP AGPLPAQSD RLANHQEDDV DLEALVNDMN ASLESLSYAC SMQSDTVPLL QNGQHARSQP RASGPPRSIQ
Isotype:	IgG
Cross-Reactivity:	Human, Mouse
Characteristics:	Polyclonal Antibodies
Purification:	Affinity purification

Target Details

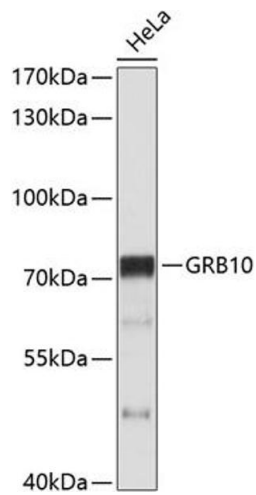
Target:	GRB10
Alternative Name:	GRB10 (GRB10 Products)
Background:	<p>The product of this gene belongs to a small family of adapter proteins that are known to interact with a number of receptor tyrosine kinases and signaling molecules. This gene encodes a growth factor receptor-binding protein that interacts with insulin receptors and insulin-like growth-factor receptors. Overexpression of some isoforms of the encoded protein inhibits tyrosine kinase activity and results in growth suppression. This gene is imprinted in a highly isoform- and tissue-specific manner, with expression observed from the paternal allele in the brain, and from the maternal allele in the placental trophoblasts. Alternatively spliced transcript variants encoding different isoforms have been identified.,GRB10,GRB-IR,Grb-10,IRBP,MEG1,RSS,Signal Transduction,Cell Biology & Developmental Biology,Growth factor,Endocrine & Metabolism,Insulin Receptor Signaling Pathway,GRB10</p>
Molecular Weight:	60 kDa/62 kDa/66 kDa/67 kDa
Gene ID:	2887
UniProt:	Q13322
Pathways:	Regulation of Carbohydrate Metabolic Process , Signaling Events mediated by VEGFR1 and VEGFR2

Application Details

Application Notes:	WB,1:500 - 1:1000
Restrictions:	For Research Use only

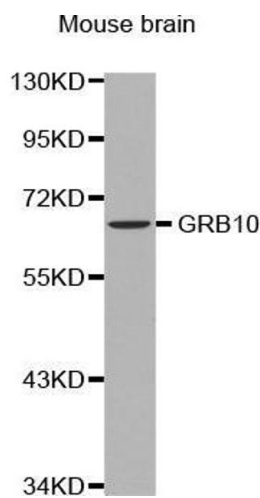
Handling

Buffer:	PBS with 0.02 % sodium azide,50 % glycerol, pH 7.3.
Preservative:	Sodium azide
Precaution of Use:	This product contains Sodium azide: a POISONOUS AND HAZARDOUS SUBSTANCE which should be handled by trained staff only.
Storage:	-20 °C
Storage Comment:	Store at -20°C. Avoid freeze / thaw cycles.



Western Blotting

Image 1. Western blot analysis of extracts of HeLa cells, using GRB10 antibody (ABIN3015267, ABIN3015268, ABIN5663731 and ABIN6213912) at 1:1000 dilution. Secondary antibody: HRP Goat Anti-Rabbit IgG (H+L) (ABIN1684268 and ABIN3020597) at 1:10000 dilution. Lysates/proteins: 25 µg per lane. Blocking buffer: 3 % nonfat dry milk in TBST. Detection: ECL Basic Kit (RM00020). Exposure time: 60s.



Western Blotting

Image 2.