



[Go to Product page](#)

Datasheet for ABIN566381
anti-GEMIN7 antibody (AA 1-131)

2 Images

Overview

| | |
|----------------------|---------------------------------------|
| Quantity: | 100 µg |
| Target: | GEMIN7 |
| Binding Specificity: | AA 1-131 |
| Reactivity: | Human |
| Host: | Mouse |
| Clonality: | Monoclonal |
| Conjugate: | This GEMIN7 antibody is un-conjugated |
| Application: | ELISA, Western Blotting (WB) |

Product Details

| | |
|-------------------|--|
| Purpose: | Mouse monoclonal antibody raised against a full length recombinant GEMIN7. |
| Immunogen: | GEMIN7 (AAH07793, 1 a.a. ~ 131 a.a) full-length recombinant protein with GST tag. MW of the GST tag alone is 26 KDa. |
| Sequence: | MQTPVNIPVP VLRLPRGPDG FSRGFAPDGR RAPLRPEVPE IQECPIAQES LESQEQRARA ALRERYLRSL LAMVGHQVSF TLHEGVRVAA HFGATDLDVA NFYVSQLQTP IGVQAEALLR CSDIISYTFK P |
| Clone: | 2E2 |
| Isotype: | IgG1 |
| Cross-Reactivity: | Human |
| Characteristics: | Antibody Reactive Against Recombinant Protein. |

Target Details

| | |
|-------------------|--|
| Target: | GEMIN7 |
| Alternative Name: | GEMIN7 (GEMIN7 Products) |
| Background: | Full Gene Name: gem (nuclear organelle) associated protein 7 Synonyms: SIP3 |
| Gene ID: | 79760 |
| Pathways: | Ribonucleoprotein Complex Subunit Organization |

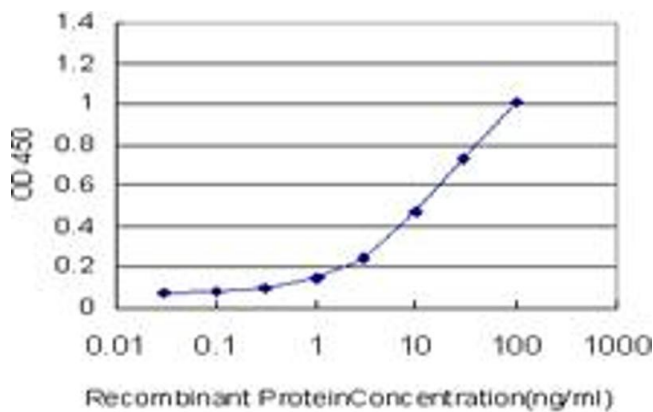
Application Details

| | |
|--------------------|--|
| Application Notes: | Optimal working dilution should be determined by the investigator. |
| Restrictions: | For Research Use only |

Handling

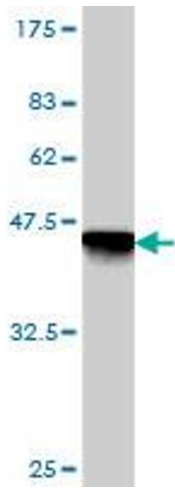
| | |
|------------------|--|
| Buffer: | In 1x PBS, pH 7.4 |
| Handling Advice: | Aliquot to avoid repeated freezing and thawing. |
| Storage: | -20 °C |
| Storage Comment: | Store at -20°C or lower. Aliquot to avoid repeated freezing and thawing. |

Images



ELISA

Image 1. Detection limit for recombinant GST tagged GEMIN7 is approximately 0.3ng/ml as a capture antibody.



Western Blotting

Image 2. Western Blot detection against Immunogen (40.15 KDa).