



[Go to Product page](#)

Datasheet for ABIN5663924
anti-POT1 antibody (AA 497-634)

2 Images

Overview

Quantity:	100 µL
Target:	POT1
Binding Specificity:	AA 497-634
Reactivity:	Human
Host:	Rabbit
Clonality:	Polyclonal
Application:	Western Blotting (WB)

Product Details

Immunogen:	Recombinant fusion protein containing a sequence corresponding to amino acids 497-634 of human POT1 (NP_056265.2).
Sequence:	TIHHYGCKQC SSLRSIQNLN SLVDKTSWIP SSSVAEALGIV PLQYVFMVF TFLDDGTGVLE AYLMDSKFF QIPASEV LMD DDLQKSVD MI MDMFCPPG I KIDAYPWLECF IKSYNVTNGT DNQICYQIFD TTVAEDVI
Isotype:	IgG
Cross-Reactivity:	Human, Mouse
Characteristics:	Polyclonal Antibodies

Target Details

Target:	POT1
Alternative Name:	POT1 (POT1 Products)

Target Details

Background: This gene is a member of the telombin family and encodes a nuclear protein involved in telomere maintenance. Specifically, this protein functions as a member of a multi-protein complex that binds to the TTAGGG repeats of telomeres, regulating telomere length and protecting chromosome ends from illegitimate recombination, catastrophic chromosome instability, and abnormal chromosome segregation. Increased transcriptional expression of this gene is associated with stomach carcinogenesis and its progression. Alternatively spliced transcript variants have been described.,POT1,CMM10,GLM9,HPOT1,Epigenetics & Nuclear Signaling,Cancer,Tumor biomarkers,Cell Biology & Developmental Biology,Cell Cycle,G2/M DNA Damage Checkpoint,POT1

Molecular Weight: 60 kDa/71 kDa

Gene ID: 25913

UniProt: [Q9NUX5](#)

Pathways: [Cell Division Cycle](#), [Telomere Maintenance](#)

Application Details

Application Notes: WB,1:200 - 1:2000

Restrictions: For Research Use only

Handling

Format: Liquid

Buffer: PBS with 0.02 % sodium azide,50 % glycerol, pH 7.3.

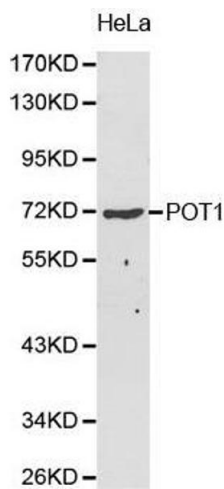
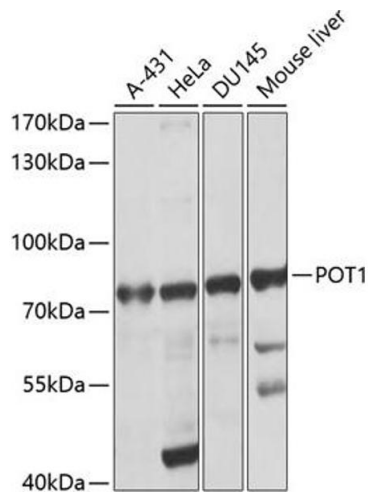
Preservative: Sodium azide

Precaution of Use: This product contains Sodium azide: a POISONOUS AND HAZARDOUS SUBSTANCE which should be handled by trained staff only.

Handling Advice: Avoid freeze / thaw cycles

Storage: -20 °C

Storage Comment: Store at -20°C. Avoid freeze / thaw cycles.



Western Blotting

Image 1. Western blot analysis of extracts of various cell lines, using POT1 antibody (ABIN3022020, ABIN3022021, ABIN5663924 and ABIN6218570) at 1:1000 dilution. Secondary antibody: HRP Goat Anti-Rabbit IgG (H+L) (ABIN1684268 and ABIN3020597) at 1:10000 dilution. Lysates/proteins: 25 µg per lane. Blocking buffer: 3 % nonfat dry milk in TBST. Detection: ECL Basic Kit (RM00020). Exposure time: 30s.

Western Blotting

Image 2.