



[Go to Product page](#)

Datasheet for ABIN5664025
anti-MBD3 antibody (AA 1-255)

2 Images

Overview

Quantity:	100 µL
Target:	MBD3
Binding Specificity:	AA 1-255
Reactivity:	Human
Host:	Rabbit
Clonality:	Polyclonal
Application:	Western Blotting (WB)

Product Details

Immunogen:	Recombinant fusion protein containing a sequence corresponding to amino acids 1-255 of human MBD3 (NP_001268383.1).
Sequence:	MERKSPSGKK FRSKPQLARY LGGSM DLSTF DFRTGKMLMS KMNKSQRQVR YDSSNQVKGK PDLNTALPVR QTASIFKQPV TKITNHPSNK VKSDPQKAVD QPRQLFWEKK LSGLNAFDIA EELVKTM DLP KGLQGVGPGC TDETL LSAIA SALHTSTMPI TGQLSAAVEK NPGVWLNTTQ PLCKAFM VTD EDIRKQEELV QQVRKRLEEA LMADMLAHVE ELARDGEAPL DKACAEDDDE EDEEEEEEE PDPDPE
Isotype:	IgG
Cross-Reactivity:	Human, Mouse
Characteristics:	Polyclonal Antibodies

Target Details

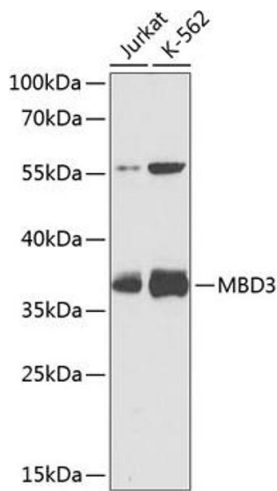
Target:	MBD3
Alternative Name:	MBD3 (MBD3 Products)
Background:	DNA methylation is the major modification of eukaryotic genomes and plays an essential role in mammalian development. This gene belongs to a family of nuclear proteins which are characterized by the presence of a methyl-CpG binding domain (MBD). The encoded protein is a subunit of the NuRD, a multisubunit complex containing nucleosome remodeling and histone deacetylase activities. Unlike the other family members, the encoded protein is not capable of binding to methylated DNA. The protein mediates the association of metastasis-associated protein 2 with the core histone deacetylase complex. Alternative splicing results in multiple transcript variants of this gene.,MBD3,Epigenetics & Nuclear Signaling,MBD3
Molecular Weight:	29 kDa/32 kDa
Gene ID:	53615
UniProt:	O95983
Pathways:	Chromatin Binding

Application Details

Application Notes:	WB,1:200 - 1:2000
Restrictions:	For Research Use only

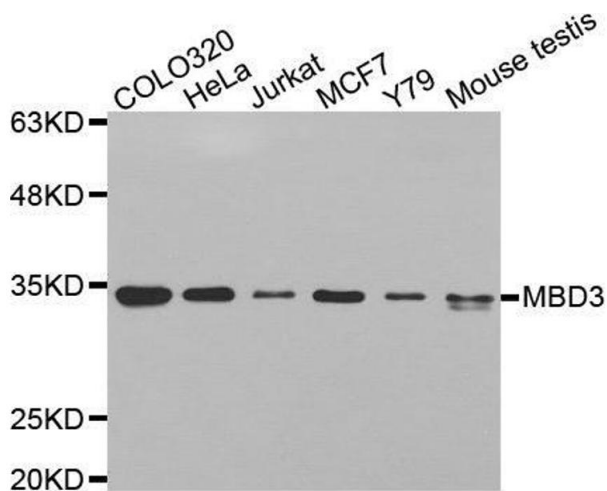
Handling

Buffer:	PBS with 0.02 % sodium azide,50 % glycerol, pH 7.3.
Preservative:	Sodium azide
Precaution of Use:	This product contains Sodium azide: a POISONOUS AND HAZARDOUS SUBSTANCE which should be handled by trained staff only.
Storage:	-20 °C
Storage Comment:	Store at -20°C. Avoid freeze / thaw cycles.



Western Blotting

Image 1. Western blot analysis of extracts of various cell lines, using MBD3 antibody (ABIN3015888, ABIN3015889, ABIN5664025 and ABIN6219470) at 1:1000 dilution. Secondary antibody: HRP Goat Anti-Rabbit IgG (H+L) (ABIN1684268 and ABIN3020597) at 1:10000 dilution. Lysates/proteins: 25 µg per lane. Blocking buffer: 3 % nonfat dry milk in TBST. Detection: ECL Basic Kit (RM00020). Exposure time: 10s.



Western Blotting

Image 2. Western blot analysis of extracts of various cell lines, using MBD3 antibody.