



[Go to Product page](#)

Datasheet for ABIN566424
anti-PTGES2 antibody (AA 270-377)

1 Image

Overview

Quantity:	50 µL
Target:	PTGES2
Binding Specificity:	AA 270-377
Reactivity:	Human
Host:	Mouse
Clonality:	Polyclonal
Conjugate:	This PTGES2 antibody is un-conjugated
Application:	Western Blotting (WB), ELISA

Product Details

Purpose:	Mouse polyclonal antibody raised against a partial recombinant PTGES2.
Immunogen:	PTGES2 (NP_079348, 270 a.a. ~ 377 a.a) partial recombinant protein with GST tag.
Sequence:	FGAVEGAVAK YMGAAAMLYI SKRLKSRHRL QDNVREDLYE AADKWVAAVG KDRPFMGGQK PNLADLAVYG VLRVMEGLDA FDDLmqHthI QPWYLRVERA ITEASPAH
Cross-Reactivity:	Human
Characteristics:	Antibody Reactive Against Recombinant Protein.

Target Details

Target:	PTGES2
Alternative Name:	PTGES2 (PTGES2 Products)

Target Details

Background:	Full Gene Name: prostaglandin E synthase 2 Synonyms: C9orf15,FLJ14038,GBF1,MGC11289,PGES2,mPGES-2
Gene ID:	80142
NCBI Accession:	NM_025072
Pathways:	Interferon-gamma Pathway , Cell RedoxHomeostasis , SARS-CoV-2 Protein Interactome

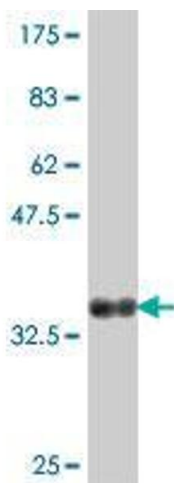
Application Details

Application Notes:	Optimal working dilution should be determined by the investigator.
Restrictions:	For Research Use only

Handling

Format:	Liquid
Buffer:	50 % glycerol
Handling Advice:	Aliquot to avoid repeated freezing and thawing.
Storage:	-20 °C
Storage Comment:	Store at -20°C or lower. Aliquot to avoid repeated freezing and thawing.

Images



Western Blotting

Image 1. Western Blot detection against Immunogen (37.99 kDa) .