



[Go to Product page](#)

Datasheet for ABIN566430
anti-HKDC1 antibody (AA 102-200)

1 Image

Overview

Quantity:	50 µL
Target:	HKDC1
Binding Specificity:	AA 102-200
Reactivity:	Human
Host:	Mouse
Clonality:	Polyclonal
Conjugate:	This HKDC1 antibody is un-conjugated
Application:	Western Blotting (WB), ELISA

Product Details

Purpose:	Mouse polyclonal antibody raised against a partial recombinant HKDC1.
Immunogen:	HKDC1 (NP_079406, 102 a.a. ~ 200 a.a) partial recombinant protein with GST tag.
Sequence:	KRHVQMESQF YPTPNEIIRG NGIELFEYVA DCLADFMKTK DLKHKKLPLG LTFSPCRQT KLEEGVLLSW TKKFKARGVQ DTDVVSRLTK AMRRHKDMD
Cross-Reactivity:	Human
Characteristics:	Antibody Reactive Against Recombinant Protein.

Target Details

Target:	HKDC1
Alternative Name:	HKDC1 (HKDC1 Products)

Target Details

Background: Full Gene Name: hexokinase domain containing 1
Synonyms: FLJ22761,FLJ37767,MGC125688

Gene ID: 80201

NCBI Accession: [NM_025130](#)

Application Details

Application Notes: Optimal working dilution should be determined by the investigator.

Restrictions: For Research Use only

Handling

Format: Liquid

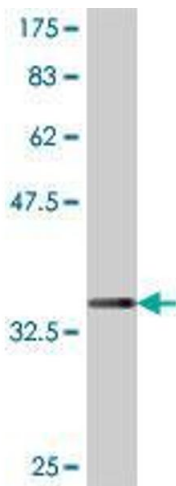
Buffer: 50 % glycerol

Handling Advice: Aliquot to avoid repeated freezing and thawing.

Storage: -20 °C

Storage Comment: Store at -20°C or lower. Aliquot to avoid repeated freezing and thawing.

Images



Western Blotting

Image 1. Western Blot detection against Immunogen (37 KDa).