



[Go to Product page](#)

Datasheet for ABIN566435
anti-ITPKC antibody (AA 63-161)

1 Image

Overview

Quantity:	50 µL
Target:	ITPKC
Binding Specificity:	AA 63-161
Reactivity:	Human
Host:	Mouse
Clonality:	Polyclonal
Conjugate:	This ITPKC antibody is un-conjugated
Application:	Western Blotting (WB), ELISA

Product Details

Purpose:	Mouse polyclonal antibody raised against a partial recombinant ITPKC.
Immunogen:	ITPKC (NP_079470, 63 a.a. ~ 161 a.a) partial recombinant protein with GST tag.
Sequence:	EGSSLHSEPE RAGLG PAPGT ESPQA EFWTD GQTEPAAAGL GVETERPKQK TEPDRSSLRT HLEWSWSELE TTCLWTETGT DGLWTDPHRS DLQFQPEEA
Cross-Reactivity:	Human
Characteristics:	Antibody Reactive Against Recombinant Protein.

Target Details

Target:	ITPKC
Alternative Name:	ITPKC (ITPKC Products)

Target Details

Background:	Full Gene Name: inositol 1,4,5-trisphosphate 3-kinase C Synonyms: IP3KC
Gene ID:	80271
NCBI Accession:	NM_025194

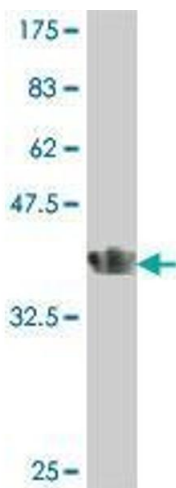
Application Details

Application Notes:	Optimal working dilution should be determined by the investigator.
Restrictions:	For Research Use only

Handling

Format:	Liquid
Buffer:	50 % glycerol
Handling Advice:	Aliquot to avoid repeated freezing and thawing.
Storage:	-20 °C
Storage Comment:	Store at -20°C or lower. Aliquot to avoid repeated freezing and thawing.

Images



Western Blotting

Image 1. Western Blot detection against Immunogen (37 KDa) .