



[Go to Product page](#)

Datasheet for ABIN566453

anti-ESX Homeobox 1 antibody (AA 124-213)

1 Image

Overview

Quantity:	50 µL
Target:	ESX Homeobox 1 (ESX1)
Binding Specificity:	AA 124-213
Reactivity:	Human
Host:	Mouse
Clonality:	Polyclonal
Conjugate:	This ESX Homeobox 1 antibody is un-conjugated
Application:	Western Blotting (WB), ELISA

Product Details

Purpose:	Mouse polyclonal antibody raised against a partial recombinant ESX1L.
Immunogen:	ESX1L (NP_703149, 124 a.a. ~ 213 a.a) partial recombinant protein with GST tag.
Sequence:	AEGPQTAEGP QPPERKRRRR TAFTQFQLQE LENFFDESQY PDVVARERLA ARLNLTEDRV QVWFQNRRAK WKRNQRVLML RNTATADLAH
Cross-Reactivity:	Human
Characteristics:	Antibody Reactive Against Recombinant Protein.

Target Details

Target:	ESX Homeobox 1 (ESX1)
Alternative Name:	ESX1 (ESX1 Products)

Target Details

Background: Full Gene Name: ESX homeobox 1
Synonyms: ESX1L,ESXR1

Gene ID: 80712

NCBI Accession: [NM_153448](#)

Application Details

Application Notes: Optimal working dilution should be determined by the investigator.

Restrictions: For Research Use only

Handling

Format: Liquid

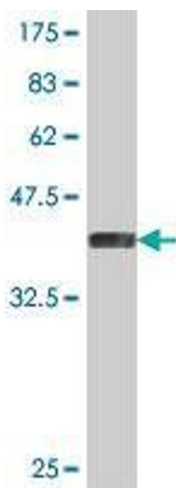
Buffer: 50 % glycerol

Handling Advice: Aliquot to avoid repeated freezing and thawing.

Storage: -20 °C

Storage Comment: Store at -20°C or lower. Aliquot to avoid repeated freezing and thawing.

Images



Western Blotting

Image 1. Western Blot detection against Immunogen (36.01 KDa) .