

Datasheet for ABIN5665064

SOCS1 ELISA Kit**1** Image[Go to Product page](#)

Overview

Quantity:	96 tests
Target:	SOCS1
Reactivity:	Rat
Method Type:	Sandwich ELISA
Detection Range:	0.15 ng/mL - 10 ng/mL
Minimum Detection Limit:	0.15 ng/mL
Application:	ELISA

Product Details

Sample Type:	Cell Culture Supernatant, Cell Lysate, Plasma, Serum, Tissue Homogenate
Analytical Method:	Quantitative
Detection Method:	Colorimetric
Specificity:	<p>This assay has high sensitivity and excellent specificity for detection of Mini Samples Suppressors Of Cytokine Signaling 1 (SOCS1).</p> <p>No significant cross-reactivity or interference between Mini Samples Suppressors Of Cytokine Signaling 1 (SOCS1) and analogues was observed.</p>
Sensitivity:	0.055 ng/mL
Grade:	Small Sample
Components:	<ul style="list-style-type: none">• Pre-coated, ready to use 96-well strip plate• Plate sealer for 96 wells• Standard Diluent

Product Details

- Assay Diluent A
- Assay Diluent B
- Stop Solution
- Standard
- Detection Reagent A
- Detection Reagent B
- TMB Substrate
- Wash Buffer (30 x concentrate)
- Instruction manual

Material not included:

- Microplate reader with 450 nm filter.
- Precision single or multi-channel pipettes and disposable tips.
- Eppendorf Tubes for diluting samples.
- Deionized or distilled water.
- Absorbent paper for blotting the microtiter plate.
- Container for Wash Solution

Target Details

Target: SOCS1

Alternative Name: Suppressors Of Cytokine Signaling 1 (SOCS1) ([SOCS1 Products](#))

Pathways: [JAK-STAT Signaling](#), [Interferon-gamma Pathway](#), [TLR Signaling](#), [Response to Growth Hormone Stimulus](#)

Application Details

- Application Notes:
- Limited by the current condition and scientific technology, we cannot completely conduct the comprehensive identification and analysis on the raw material provided by suppliers. So there might be some qualitative and technical risks to use the kit.
 - The final experimental results will be closely related to validity of the products, operation skills of the end users and the experimental environments. Please make sure that sufficient samples are available.
 - Kits from different batches may be a little different in detection range, sensitivity and color developing time.
 - Do not mix or substitute reagents from one kit lot to another. Use only the reagents supplied by manufacturer.
 - Protect all reagents from strong light during storage and incubation. All the bottle caps of reagents should be covered tightly to prevent the evaporation and contamination of microorganism.
 - There may be some foggy substance in the wells when the plate is opened at the first time. It will not have any effect on the final assay results. Do not remove microtiter plate from the

storage bag until needed.

- Wrong operations during the reagents preparation and loading, as well as incorrect parameter setting for the plate reader may lead to incorrect results. A microplate plate reader with a bandwidth of 10nm or less and an optical density range of 0-3 O.D. or greater at 450 ± 10nm wavelength is acceptable for use in absorbance measurement. Please read the instruction carefully and adjust the instrument prior to the experiment.
- Even the same operator might get different results in two separate experiments. In order to get better reproducible results, the operation of every step in the assay should be controlled. Furthermore, a preliminary experiment before assay for each batch is recommended.
- Each kit has been strictly passed Q.C test. However, results from end users might be inconsistent with our in-house data due to some unexpected transportation conditions or different lab equipments. Intra-assay variance among kits from different batches might arise from above factors, too.
- Kits from different manufacturers for the same item might produce different results, since we have not compared our products with other manufacturers.

Sample Volume:	25 µL
Assay Time:	3 h
Plate:	Pre-coated
Protocol:	<p>The test principle applied in this kit is Sandwich enzyme immunoassay. The microtiter plate provided in this kit has been pre-coated with an antibody specific to Mini Samples Suppressors Of Cytokine Signaling 1 (SOCS1). Standards or samples are then added to the appropriate microtiter plate wells with a biotin-conjugated antibody specific to Mini Samples Suppressors Of Cytokine Signaling 1 (SOCS1). Next, Avidin conjugated to Horseradish Peroxidase (HRP) is added to each microplate well and incubated. After TMB substrate solution is added, only those wells that contain Mini Samples Suppressors Of Cytokine Signaling 1 (SOCS1), biotin-conjugated antibody and enzyme-conjugated Avidin will exhibit a change in color. The enzyme-substrate reaction is terminated by the addition of sulphuric acid solution and the color change is measured spectrophotometrically at a wavelength of 450nm ± 10nm. The concentration of Mini Samples Suppressors Of Cytokine Signaling 1 (SOCS1) in the samples is then determined by comparing the O.D. of the samples to the standard curve.</p>
Reagent Preparation:	<ol style="list-style-type: none"> 1. Bring all kit components and samples to room temperature (18-25 °C) before use. If the kit will not be used up in one time, please only take out strips and reagents for present experiment, and leave the remaining strips and reagents in required condition. 2. Standard - Reconstitute the Standard with 1.0 mL of Standard Diluent, keep for 10 minutes at room temperature, shake gently (not to foam). The concentration of the standard in the stock solution is 80ng/mL. Firstly dilute the stock solution to 10ng/mL and the diluted standard serves as the highest standard (10ng/mL). Then prepare 7 tubes containing 0.5 mL Standard

Diluent and produce a double dilution series by transferring 500 µL each. Mix each tube thoroughly before the next transfer. Set up 7 points of diluted standard such as 10ng/mL, 5ng/mL, 2.5ng/mL, 1.25ng/mL, 0.625ng/mL, 0.312ng/mL, 0.156ng/mL, and the last microcentrifuge tube with Standard Diluent is the blank as 0pg/mL.

3. Detection Reagent A and Detection Reagent B - If lyophilized reconstitute the Detection Reagent A with 150µL of Reagent Diluent, keep for 10 minutes at room temperature, shake gently (not to foam). Briefly spin or centrifuge the stock Detection A and Detection B before use. Dilute them to the working concentration 100-fold with Assay Diluent A and B, respectively.
4. Wash Solution - Dilute 10 mL of Wash Solution concentrate (30x) with 290 mL of deionized or distilled water to prepare 300 mL of Wash Solution (1x).
5. TMB substrate - Aspirate the needed dosage of the solution with sterilized tips and do not dump the residual solution into the vial again.

Note:

1. Making serial dilution in the wells directly is not permitted.
2. Prepare standard within 15 minutes before assay. Please do not dissolve the reagents at 37 °C directly.
3. Please carefully reconstitute Standards or working Detection Reagent A and B according to the instruction, and avoid foaming and mix gently until the crystals are completely dissolved. To minimize imprecision caused by pipetting, use small volumes and ensure that pipettors are calibrated. It is recommended to suck more than 10µL for once pipetting.
4. The reconstituted Standards, Detection Reagent A and Detection Reagent B can be used only once.
5. Prepare Substrate working Solution within 15 minutes before assay.
6. If crystals have formed in the Wash Solution concentrate (30x), warm to room temperature and mix gently until the crystals are completely dissolved.
7. Contaminated water or container for reagent preparation will influence the detection result.

Assay Procedure:

1. Prepare all reagents, samples and standards,
2. Add 25µL standard or sample to each well. Incubate 1 hour at 37 °C,
3. Aspirate and add 25µL prepared Detection Reagent A. Incubate 1 hour at 37 °C,
4. Aspirate and wash 3 times,
5. Add 25µL prepared Detection Reagent B. Incubate 30 minutes at 37 °C,
6. Aspirate and wash 5 times,
7. Add 25µL Substrate Solution. Incubate 10-20 minutes at 37 °C,
8. Add 20µL Stop Solution. Read at 450nm immediately.

Assay Precision:

Intra-assay Precision (Precision within an assay): 3 samples with low, middle and high level Mini Samples Suppressors Of Cytokine Signaling 1 (SOCS1) were tested 20 times on one plate, respectively.

Inter-assay Precision (Precision between assays): 3 samples with low, middle and high level Mini Samples Suppressors Of Cytokine Signaling 1 (SOCS1) were tested on 3 different plates, 8

Application Details

replicates in each plate.

$CV(\%) = SD/mean \times 100$

Intra-Assay: CV<10%

Inter-Assay: CV<12%

Restrictions: For Research Use only

Handling

Precaution of Use: The Stop Solution suggested for use with this kit is an acid solution. Wear eye, hand, face, and clothing protection when using this material.

Handling Advice: The stability of kit is determined by the loss rate of activity. The loss rate of this kit is less than 5 % within the expiration date under appropriate storage condition.

To minimize extra influence on the performance, operation procedures and lab conditions, especially room temperature, air humidity, incubator temperature should be strictly controlled. It is also strongly suggested that the whole assay is performed by the same operator from the beginning to the end.

Storage: 4 °C

Storage Comment:

- For unopened kit: All the reagents should be kept according to the labels on vials. The Standard, Detection Reagent A, Detection Reagent B and the 96-well strip plate should be stored at -20°C upon receipt while the others should be at 4°C.
- For opened kit: When the kit is opened, the remaining reagents still need to be stored according to the above storage condition. Besides, please return the unused wells to the foil pouch containing the desiccant pack, and reseal along entire edge of zip-seal.

Note: It is highly recommended to use the remaining reagents within 1 month provided this is within the expiration date of the kit.

- For ELISA kit, 1 day storage at 37°C can be considered as 2 months at 4°C, which means 3 days at 37°C equaling 6 months at 4°C.

Expiry Date: 6 months

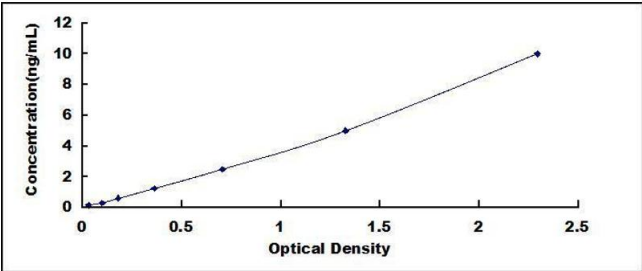


Image 1.