

Datasheet for ABIN566513  
**anti-SLC25A18 antibody (AA 124-184)**



[Go to Product page](#)

1 Image

## Overview

Quantity:	50 µL
Target:	SLC25A18
Binding Specificity:	AA 124-184
Reactivity:	Human
Host:	Mouse
Clonality:	Polyclonal
Conjugate:	This SLC25A18 antibody is un-conjugated
Application:	ELISA, Western Blotting (WB)

## Product Details

Purpose:	Mouse polyclonal antibody raised against a partial recombinant SLC25A18.
Immunogen:	SLC25A18 (NP_113669, 124 a.a. ~ 184 a.a) partial recombinant protein with GST tag.
Sequence:	EMLKIQLQDA GRLAVHHQGS ASAPSTSRYSY TTGSASTHRR PSATLIAWEL LRTQGLAGLY R
Cross-Reactivity:	Human
Characteristics:	Antibody Reactive Against Recombinant Protein.

## Target Details

Target:	SLC25A18
Alternative Name:	SLC25A18 ( <a href="#">SLC25A18 Products</a> )
Background:	Full Gene Name: solute carrier family 25 (mitochondrial carrier), member 18

## Target Details

Synonyms: GC2

Gene ID: 83733

NCBI Accession: [NM\\_031481](#)

## Application Details

Application Notes: Optimal working dilution should be determined by the investigator.

Restrictions: For Research Use only

## Handling

Format: Liquid

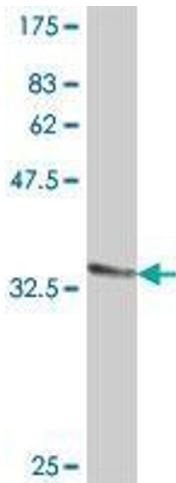
Buffer: 50 % glycerol

Handling Advice: Aliquot to avoid repeated freezing and thawing.

Storage: -20 °C

Storage Comment: Store at -20°C or lower. Aliquot to avoid repeated freezing and thawing.

## Images



### Western Blotting

**Image 1.** Western Blot detection against Immunogen (32.82 kDa).