

Datasheet for ABIN566567

anti-DOT1L antibody (AA 3-108)

4 Images

1 Publication

[Go to Product page](#)

Overview

Quantity:	100 µg
Target:	DOT1L
Binding Specificity:	AA 3-108
Reactivity:	Human
Host:	Mouse
Clonality:	Monoclonal
Conjugate:	This DOT1L antibody is un-conjugated
Application:	Western Blotting (WB), ELISA, Immunofluorescence (IF)

Product Details

Purpose:	Mouse monoclonal antibody raised against a partial recombinant DOT1L.
Immunogen:	DOT1L (NP_115871, 3 a.a. ~ 108 a.a) partial recombinant protein with GST tag. MW of the GST tag alone is 26 KDa.
Sequence:	EKLELRKSP VGAEPVYPW PLPVYDKHHD AAHEIETIR WVCEEIPDLK LAMENYVLID YDTKSFESMQ RLCDKYNRAI DSIHQLWKGT TQPMKLNTRP STGLLR
Clone:	6A6
Isotype:	IgG1
Cross-Reactivity:	Human
Characteristics:	Antibody Reactive Against Recombinant Protein.

Target Details

Target:	DOT1L
Alternative Name:	DOT1L (DOT1L Products)
Background:	Full Gene Name: DOT1-like, histone H3 methyltransferase (S. cerevisiae) Synonyms: DKFZp586P1823, DOT1, KIAA1814, KMT4
Gene ID:	84444
NCBI Accession:	NM_032482

Application Details

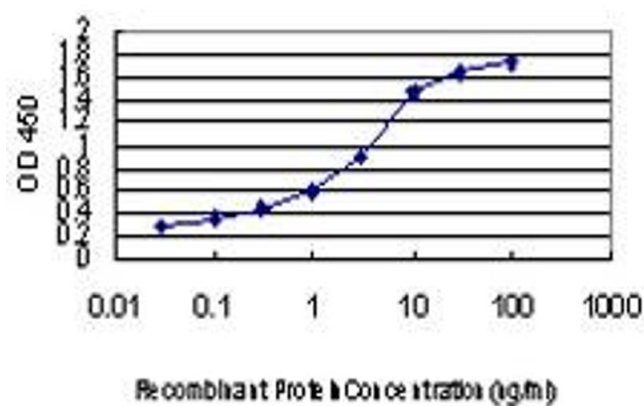
Application Notes:	Optimal working dilution should be determined by the investigator.
Restrictions:	For Research Use only

Handling

Buffer:	In 1x PBS, pH 7.4
Handling Advice:	Aliquot to avoid repeated freezing and thawing.
Storage:	-20 °C
Storage Comment:	Store at -20°C or lower. Aliquot to avoid repeated freezing and thawing.

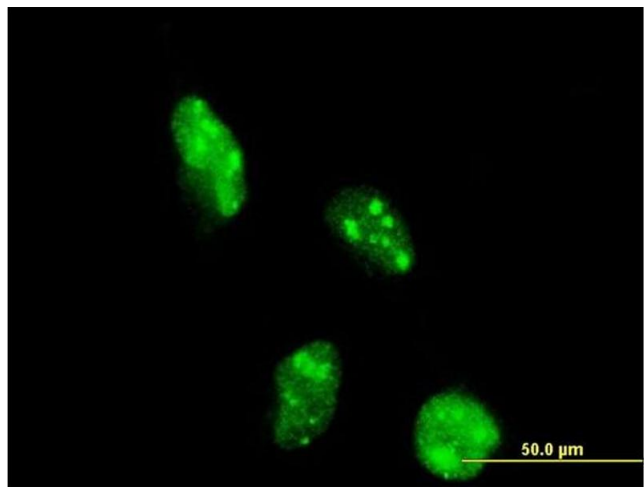
Publications

Product cited in:	Phillips, Wildt, Comizzoli: "Incidence of methylated histones H3K4 and H3K79 in cat germinal vesicles is regulated by specific nuclear factors at the acquisition of developmental competence during the folliculogenesis." in: Journal of assisted reproduction and genetics , Vol. 33, Issue 6, pp. 783-94, (2016) (PubMed).
-------------------	---



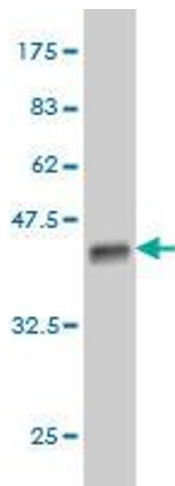
ELISA

Image 1. Detection limit for recombinant GST tagged DOT1L is approximately 0.03ng/ml as a capture antibody.



Immunofluorescence

Image 2. Immunofluorescence of monoclonal antibody to DOT1L on HeLa cell. [antibody concentration 10 ug/ml]



Western Blotting

Image 3. Western Blot detection against Immunogen (37.4 KDa) .

Please check the [product details page](#) for more images. Overall 4 images are available for ABIN566567.