



[Go to Product page](#)

Datasheet for ABIN5665750
anti-CD42a antibody (PE)

2 Images

Overview

Quantity:	100 tests
Target:	CD42a (GP9)
Reactivity:	Human, Dog
Host:	Mouse
Clonality:	Monoclonal
Conjugate:	This CD42a antibody is conjugated to PE
Application:	Flow Cytometry (FACS)

Product Details

Immunogen:	Human acute lymphoblastic leukemia cells
Clone:	GR-P
Isotype:	IgG1
Specificity:	The mouse monoclonal antibody GR-P (also known as GRP-P) recognizes an extracellular epitope of CD42a (glycoprotein 9), a 22 kDa transmembrane protein constitutively expressed on megakaryocytes and platelets.
Cross-Reactivity (Details):	Human, Canine (Dog)
Purification:	Purified antibody is conjugated with R-phycoerythrin (PE) under optimum conditions. Unconjugated antibody and free fluorochrome are removed by size-exclusion chromatography.

Target Details

Target:	CD42a (GP9)
---------	-------------

Target Details

Alternative Name: CD42a ([GP9 Products](#))

Background: Glycoprotein IX platelet, CD42a, also known as glycoprotein 9 (GPIX), composes together with GPIb alpha, GPIb beta and GPV the GPIb-IX-V receptor complex critical in the process of platelet-rich thrombus formation by tethering the platelet to a thrombogenic surface. CD42b binds to von Willebrand factor (VWF) exposed at a site of vascular injury, as well as to thrombin, coagulation factors XI and XII, high molecular weight kininogen, TSP-1, integrin Mac-1 and P-selectin. Defects in the gene encoding CD42a are a cause of Bernard-Soulier syndrome, also known as giant platelet disease. These patients have unusually large platelets and have a clinical bleeding tendency., GPIX, GP9

Gene ID: 2815

UniProt: [P14770](#)

Application Details

Application Notes: Flow cytometry: The reagent is designed for analysis of human blood cells using 10 µL reagent / 100 µL of whole blood or 10⁶ cells in a suspension. The content of a vial (1 ml) is sufficient for 100 tests.

Comment: The purified antibody is conjugated with R-Phycoerythrin (PE) under optimum conditions. The conjugate is purified by size-exclusion chromatography and adjusted for direct use. No reconstitution is necessary.

Restrictions: For Research Use only

Handling

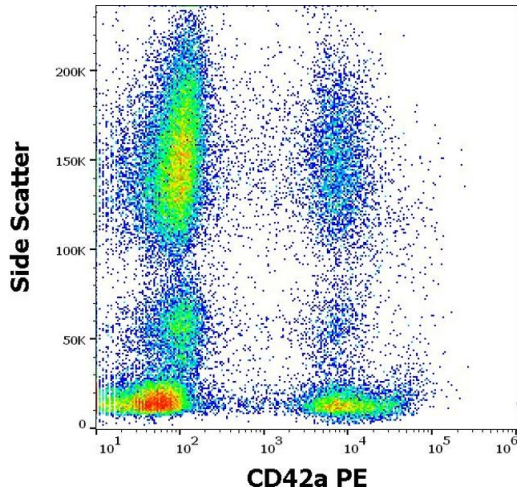
Buffer: Stabilizing phosphate buffered saline (PBS), pH 7.4, 15 mM sodium azide

Preservative: Sodium azide

Precaution of Use: This product contains Sodium azide: a POISONOUS AND HAZARDOUS SUBSTANCE which should be handled by trained staff only.

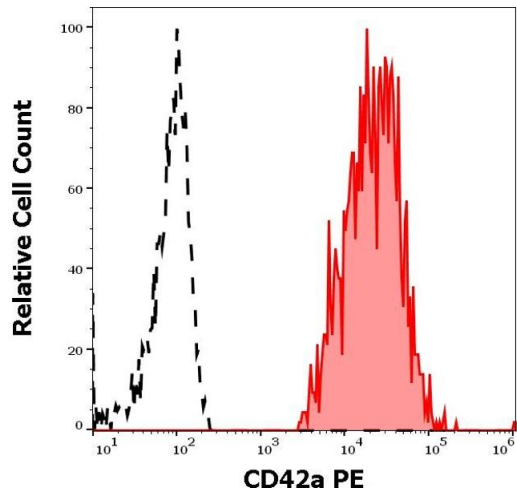
Storage: 4 °C

Storage Comment: Store at 2-8°C. Protect from prolonged exposure to light. Do not freeze.



Flow Cytometry

Image 1. Flow cytometry surface staining pattern of human peripheral whole blood stained using anti-human CD42a (GR-P) PE antibody (10 μ L reagent / 100 μ L of peripheral whole blood).



Flow Cytometry

Image 2. Separation of human thrombocytes (red-filled) from human neutrophil granulocytes (black-dashed) in flow cytometry analysis (surface staining) of human peripheral whole blood stained using anti-human CD42a (GR-P) PE antibody (10 μ L reagent / 100 μ L of peripheral whole blood).