



Datasheet for ABIN5665752 **anti-PDCD1LG2 antibody (PE)**



[Go to Product page](#)

4 Images

Overview

Quantity:	100 tests
Target:	PDCD1LG2
Reactivity:	Human
Host:	Mouse
Clonality:	Monoclonal
Conjugate:	This PDCD1LG2 antibody is conjugated to PE
Application:	Flow Cytometry (FACS)

Product Details

Immunogen:	human CD273 cDNA
Clone:	24F-10C12
Isotype:	IgG2a kappa
Specificity:	The mouse monoclonal antibody 24F.10C12 recognizes an extracellular epitope of CD273 / PD-L2 (also known as B7-DC), a 25 kDa type I transmembrane protein expressed by dendritic cells, activated monocytes and T cells, heart, first trimester placenta, lung and liver, as well as in Hodgkin's lymphoma cells and primary mediastinal B cell lymphoma (PMBL).
Cross-Reactivity (Details):	Human
Purification:	Purified antibody is conjugated with R-phycoerythrin (PE) under optimum conditions. Unconjugated antibody and free fluorochrome are removed by size-exclusion chromatography.

Target Details

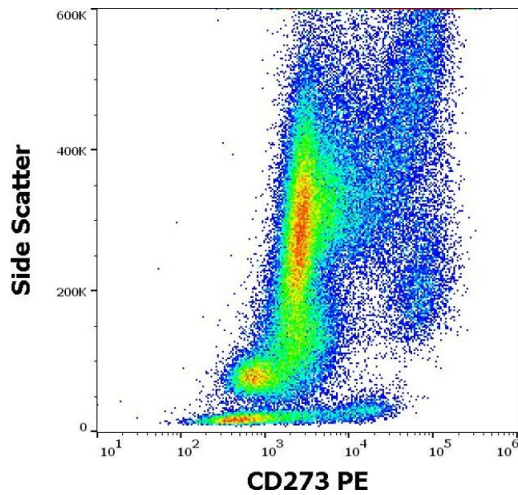
Target:	PDCD1LG2
Alternative Name:	CD273 / PD-L2 (PDCD1LG2 Products)
Background:	Programmed cell death 1 ligand 2,CD273 / PD-L2 (programmed death ligand-1), also known as B7-DC, is a member of the B7 family of regulatory proteins. It costimulates the proliferation of T cells, and mediates IFN gamma production. Ligation of CD273 on dendritic cells enhances dendritic cell activation and T cell responses. When interacting with CD279, it can act as a coinhibitor of the T cell function. CD273 expression is a useful marker to distinguish primary mediastinal B cell lymphoma from other diffuse large B cell lymphomas.,PDCD1LG2, B7DC, Btdc, PDL2, PDCD1L2, bA574F11.2, Butyrophilin, B7-DC,
Gene ID:	80380
UniProt:	Q9BQ51

Application Details

Application Notes:	Flow cytometry: The reagent is designed for analysis of human blood cells using 10 µL reagent / 100 µL of whole blood or 10 ⁶ cells in a suspension. The content of a vial (1 ml) is sufficient for 100 tests.
Comment:	The purified antibody is conjugated with R-Phycoerythrin (PE) under optimum conditions. The conjugate is purified by size-exclusion chromatography and adjusted for direct use. No reconstitution is necessary.
Restrictions:	For Research Use only

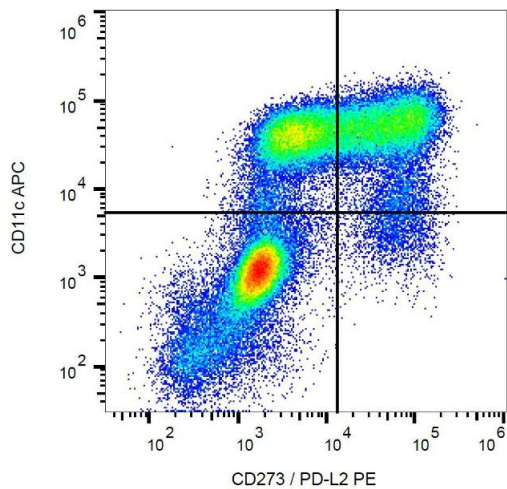
Handling

Buffer:	Stabilizing phosphate buffered saline (PBS), pH 7.4, 15 mM sodium azide
Preservative:	Sodium azide
Precaution of Use:	This product contains Sodium azide: a POISONOUS AND HAZARDOUS SUBSTANCE which should be handled by trained staff only.
Storage:	4 °C
Storage Comment:	Store at 2-8°C. Protect from prolonged exposure to light. Do not freeze.



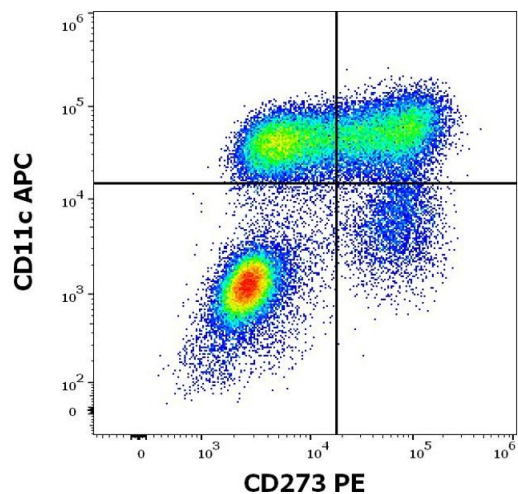
Flow Cytometry

Image 1. Flow cytometry surface staining pattern of human GM-CSF and Il-4 stimulated peripheral blood mononuclear cells stained using anti-human CD273 (24F.10C12) PE antibody (10 μ L reagent per milion cells in 100 μ L of cell suspension).



Flow Cytometry

Image 2. Surface staining of CD273 on monocyte-derived dendritic cells with anti-CD273 (24F.10C12) PE.



Flow Cytometry

Image 3. Flow cytometry multicolor surface staining of human GM-CSF and Il-4 stimulated peripheral blood mononuclear cells stained using anti-human CD273 (24F.10C12) PE antibody (10 μ L reagent per milion cells in 100 μ L of cell suspension) and anti-human CD11c (BU15) APC antibody (10 μ L reagent / 100 μ L of peripheral whole blood).

Please check the [product details page](#) for more images. Overall 4 images are available for ABIN5665752.