



[Go to Product page](#)

Datasheet for ABIN566577

anti-Myopalladin antibody (AA 61-170)

3 Images

Overview

Quantity:	100 µg
Target:	Myopalladin (MYPN)
Binding Specificity:	AA 61-170
Reactivity:	Human
Host:	Mouse
Clonality:	Monoclonal
Conjugate:	This Myopalladin antibody is un-conjugated
Application:	Western Blotting (WB), ELISA

Product Details

Purpose:	Mouse monoclonal antibody raised against a partial recombinant MYPN.
Immunogen:	MYPN (NP_115967, 61 a.a. ~ 170 a.a) partial recombinant protein with GST tag. MW of the GST tag alone is 26 KDa.
Sequence:	PDLSAFLSQE ELDESVNLR LAINYDPLEK ADETQARKRL SPDQMKHSPN LSFEPNFCQD NPRSPTSSKE SPQEAKRPQY CSETQSKKVF LNKAADFIEE LSSLFKSHSS
Clone:	4C8
Isotype:	IgG1
Cross-Reactivity:	Human
Characteristics:	Antibody Reactive Against Recombinant Protein.

Target Details

Target:	Myopalladin (MYPN)
Alternative Name:	MYPN (MYPN Products)
Background:	Full Gene Name: myopalladin Synonyms: MYOP
Gene ID:	84665
NCBI Accession:	NM_032578

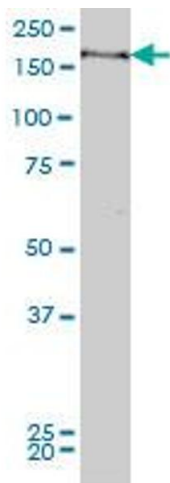
Application Details

Application Notes:	Optimal working dilution should be determined by the investigator.
Restrictions:	For Research Use only

Handling

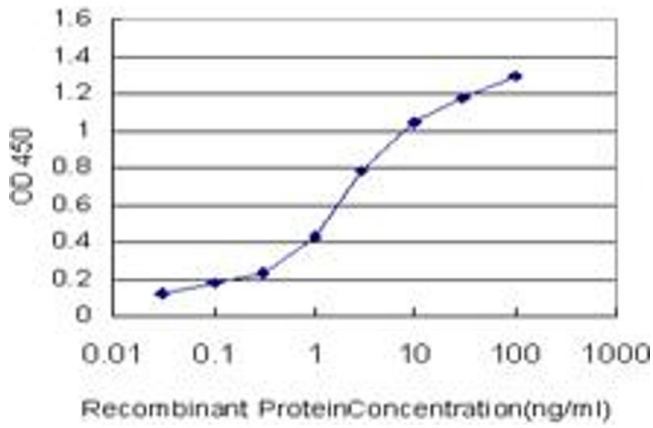
Buffer:	In 1x PBS, pH 7.4
Handling Advice:	Aliquot to avoid repeated freezing and thawing.
Storage:	-20 °C
Storage Comment:	Store at -20°C or lower. Aliquot to avoid repeated freezing and thawing.

Images



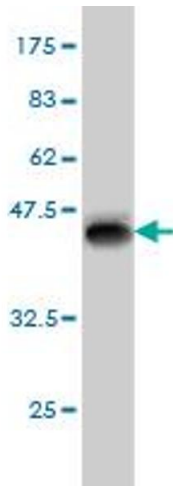
Western Blotting

Image 1. MYPN monoclonal antibody (M04), clone 4C8
Western Blot analysis of MYPN expression in HeLa S3 NE .



ELISA

Image 2. Detection limit for recombinant GST tagged MYPN is approximately 0.03ng/ml as a capture antibody.



Western Blotting

Image 3. Western Blot detection against Immunogen (37.84 KDa).