



[Go to Product page](#)

Datasheet for ABIN5665945

## Asymmetrical Dimethylarginine (ADMA) peptide (BSA)

### 3 Images

#### Overview

Quantity:	1 mg
Target:	ADMA
Origin:	All Species
Source:	Synthetic
Purification tag / Conjugate:	This ADMA peptide is labelled with BSA.
Application:	Immunogen (Imm), SDS-PAGE (SDS), Western Blotting (WB)

#### Product Details

Purity: >95 %

#### Target Details

Target:	ADMA
Background:	Alternative Names: N,N-Dimethylarginine, NG,NG-Dimethylarginine dihydrochloride, Asymmetric Dimethylarginine

#### Application Details

Application Notes:	Optimal working dilution should be determined by the investigator.
Restrictions:	For Research Use only

#### Handling

Format: Lyophilized

## Handling

Buffer: PBS, pH 7.4.

## Images

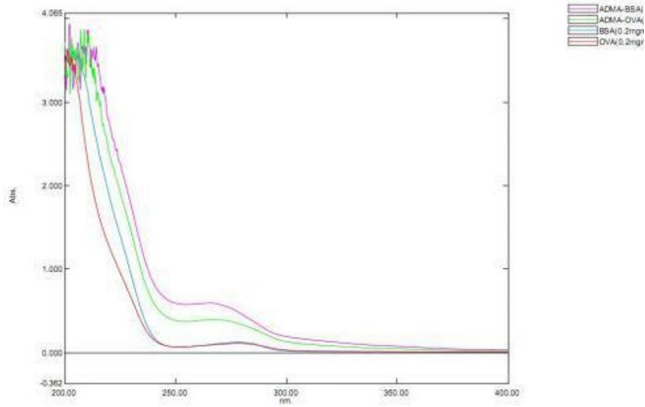


Image 1.

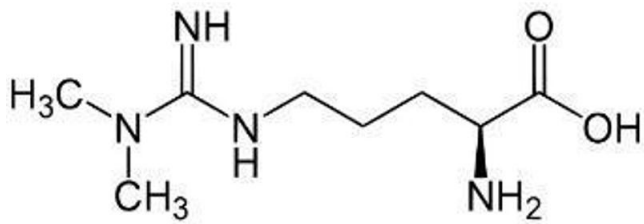


Image 2.

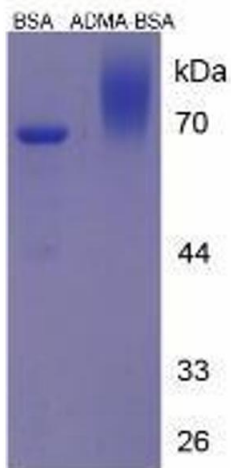


Image 3.