



Datasheet for ABIN5665959

Cyclosporin A (CsA) peptide (BSA)



[Go to Product page](#)

3 Images

Overview

Quantity:	1 mg
Target:	Cyclosporin A (CsA)
Origin:	All Species
Source:	Synthetic
Purification tag / Conjugate:	This Cyclosporin A peptide is labelled with BSA.
Application:	Immunogen (Imm), SDS-PAGE (SDS), Western Blotting (WB)

Product Details

Purity: >95 %

Target Details

Target:	Cyclosporin A (CsA)
Target Type:	Chemical
Background:	Alternative Names: Ciclosporin, Cyclosporine, Cyclosporin

Application Details

Application Notes:	Optimal working dilution should be determined by the investigator.
Restrictions:	For Research Use only

Handling

Format: Lyophilized

Handling

Buffer: PBS, pH 7.4.

Images

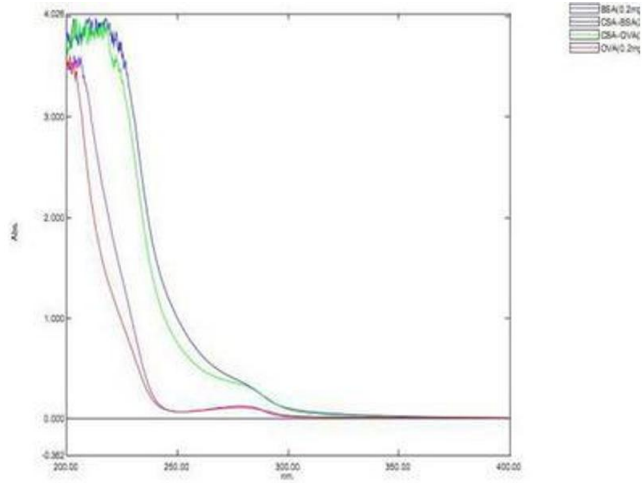


Image 1.

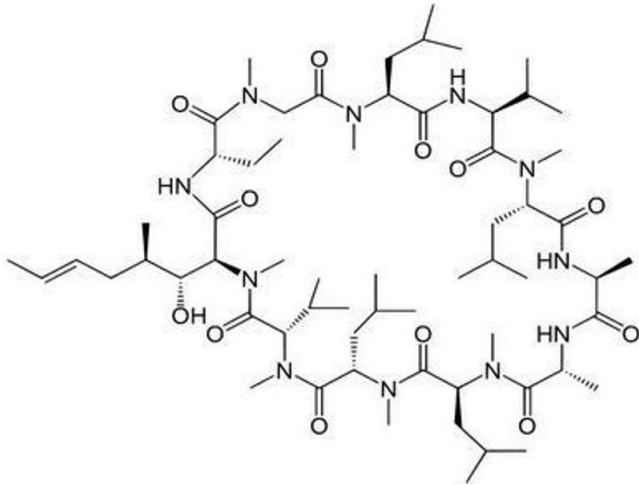


Image 2.

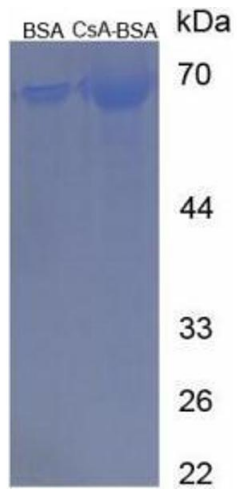


Image 3.