



Datasheet for ABIN5666002

## Salusin alpha (Salusin alpha) peptide (BSA)



[Go to Product page](#)

### 3 Images

#### Overview

Quantity:	1 mg
Target:	Salusin alpha
Origin:	Human
Source:	Synthetic
Purification tag / Conjugate:	This Salusin alpha peptide is labelled with BSA.
Application:	Immunogen (Imm), SDS-PAGE (SDS), Western Blotting (WB)

#### Product Details

Purity:	>90 %
---------	-------

#### Target Details

Target:	Salusin alpha
---------	---------------

#### Application Details

Application Notes:	Optimal working dilution should be determined by the investigator.
Restrictions:	For Research Use only

#### Handling

Format:	Lyophilized
Buffer:	PBS, pH 7.4.

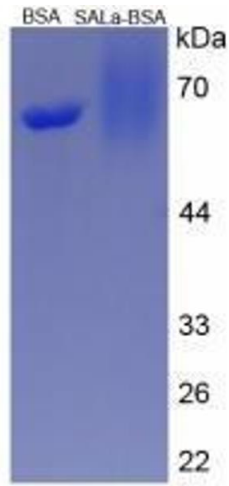


Image 1.

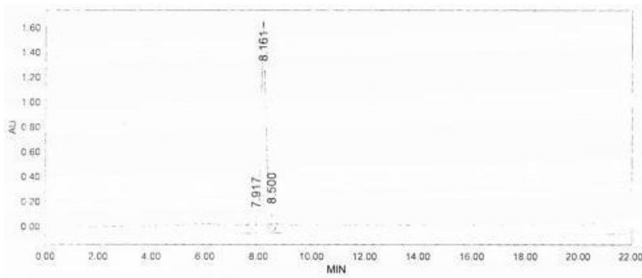


Image 2.

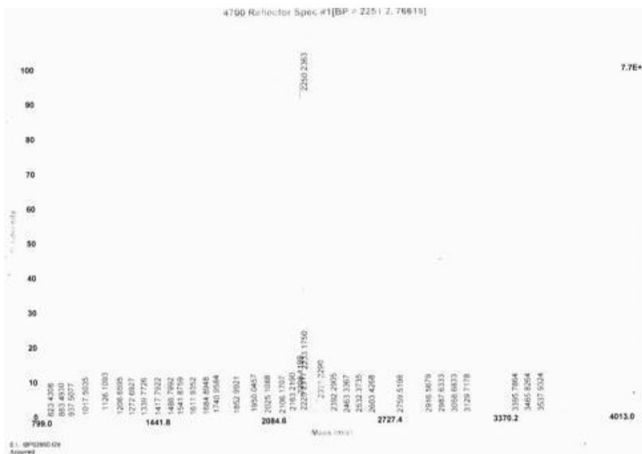


Image 3.