



Datasheet for ABIN5666107

## Cross Linked C-Telopeptide of Type II Collagen (CTX-II) peptide (Ovalbumin)



[Go to Product page](#)

### 3 Images

#### Overview

Quantity:	1 mg
Target:	CTXII (CTX-II)
Origin:	Human
Source:	Synthetic
Purification tag / Conjugate:	This CTXII peptide is labelled with Ovalbumin.
Application:	Immunogen (Imm), SDS-PAGE (SDS), Western Blotting (WB)

#### Product Details

Purity: >90 %

#### Target Details

Target:	CTXII (CTX-II)
Background:	Alternative Names: CTX-II, CTX2

#### Application Details

Application Notes:	Optimal working dilution should be determined by the investigator.
Restrictions:	For Research Use only

#### Handling

Format:	Lyophilized
Buffer:	PBS, pH 7.4.

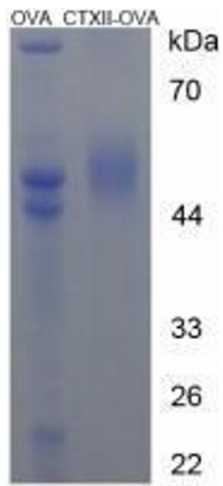


Image 1.

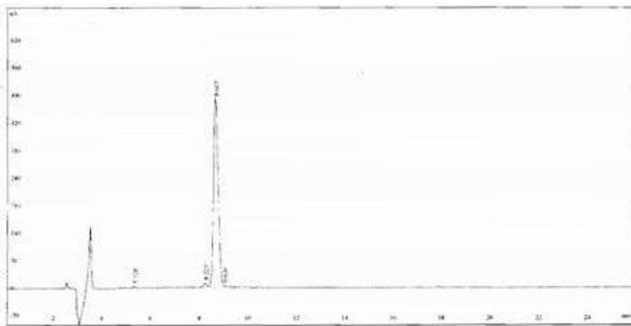


Image 2.

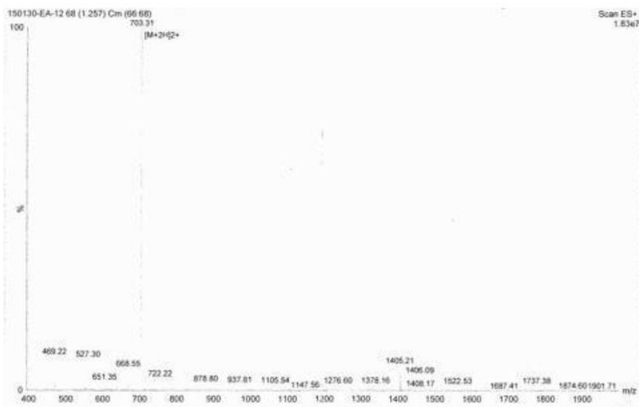


Image 3.