



[Go to Product page](#)

Datasheet for ABIN5666115

Calreticulin (CALR) peptide (Ovalbumin)

3 Images

Overview

Quantity:	1 mg
Target:	Calreticulin (CALR)
Origin:	Human
Source:	Synthetic
Purification tag / Conjugate:	This Calreticulin peptide is labelled with Ovalbumin.
Application:	Western Blotting (WB), Immunogen (Imm), SDS-PAGE (SDS)

Product Details

Purity: >90 %

Target Details

Target:	Calreticulin (CALR)
Background:	Alternative Names: CALR, RO, SSA, CC1qR, ERp60, HACBP, grp60, CRTC, CRP55, Calregulin, Sicca Syndrome Antigen A, Autoantigen Ro, Endoplasmic reticulum resident protein 60

Application Details

Application Notes:	Optimal working dilution should be determined by the investigator.
Restrictions:	For Research Use only

Handling

Format: Lyophilized

Handling

Buffer: PBS, pH 7.4.

Images

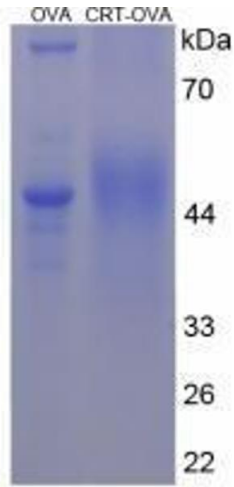


Image 1.

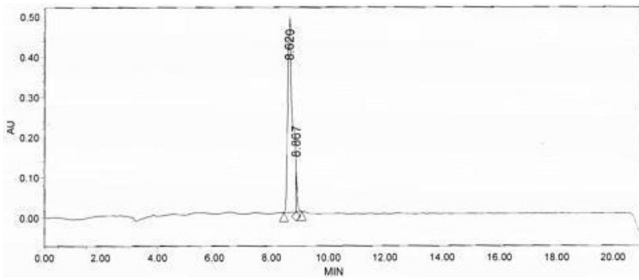


Image 2.

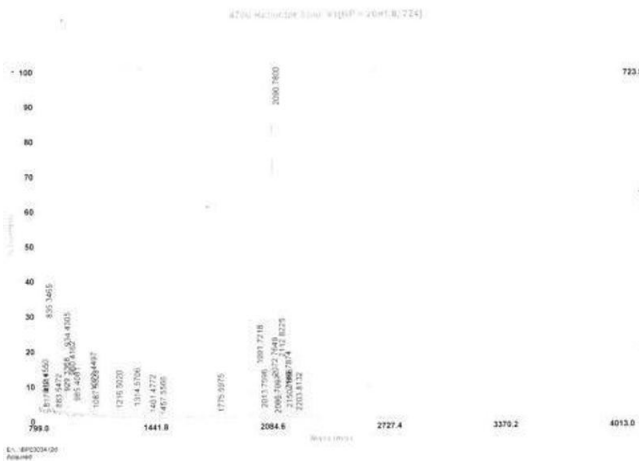


Image 3.