

Datasheet for ABIN5666138

Corticotropin Releasing Hormone (CRH) peptide (Ovalbumin)[Go to Product page](#)**3** Images

Overview

Quantity:	1 mg
Target:	CRH
Origin:	Human
Source:	Synthetic
Purification tag / Conjugate:	This CRH peptide is labelled with Ovalbumin.
Application:	Western Blotting (WB), Immunogen (Imm), SDS-PAGE (SDS)

Product Details

Purity:	> 90 %
---------	--------

Target Details

Target:	CRH
Background:	Alternative Names: CRF, Corticotropin Releasing Factor, Corticoliberin

Application Details

Application Notes:	Optimal working dilution should be determined by the investigator.
Restrictions:	For Research Use only

Handling

Format:	Lyophilized
Buffer:	PBS, pH 7.4.

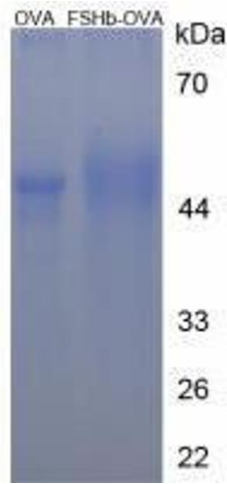


Image 1.

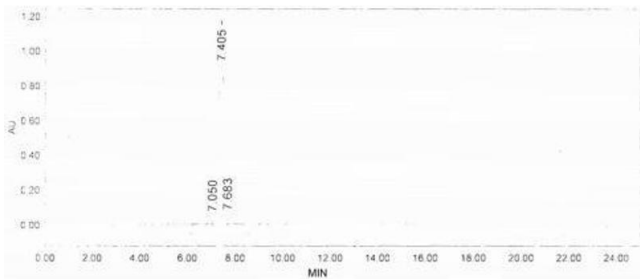


Image 2.

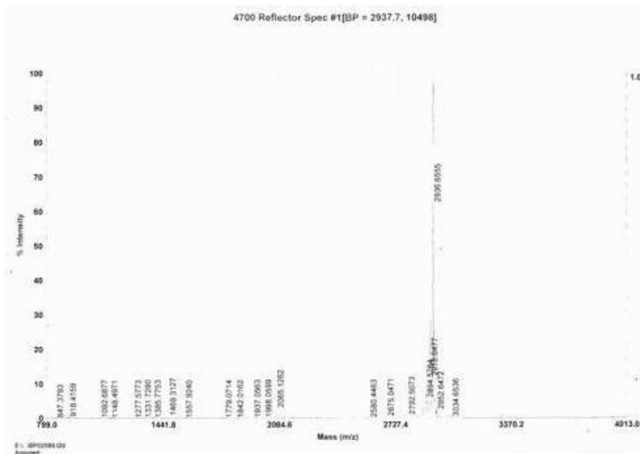


Image 3.