

Datasheet for ABIN5666163

## Proenkephalin (PENK) peptide (Ovalbumin)

3 Images



[Go to Product page](#)

### Overview

Quantity:	1 mg
Target:	Enkephalin (PENK)
Origin:	Human, Mouse, Rat, Cow, Dog, Guinea Pig, Horse, Pig, Rabbit, Sheep, Chicken
Source:	Synthetic
Purification tag / Conjugate:	This Enkephalin peptide is labelled with Ovalbumin.
Application:	Immunogen (Imm), Western Blotting (WB), SDS-PAGE (SDS)

### Product Details

Purity: > 90 %

### Target Details

Target: Enkephalin (PENK)

### Application Details

Application Notes: Optimal working dilution should be determined by the investigator.

Restrictions: For Research Use only

### Handling

Format: Lyophilized

Buffer: PBS, pH 7.4.

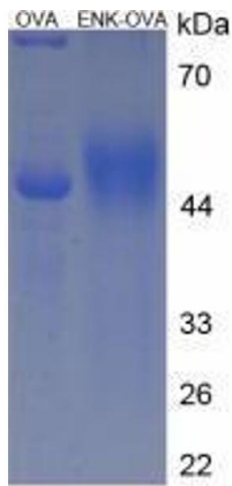


Image 1.

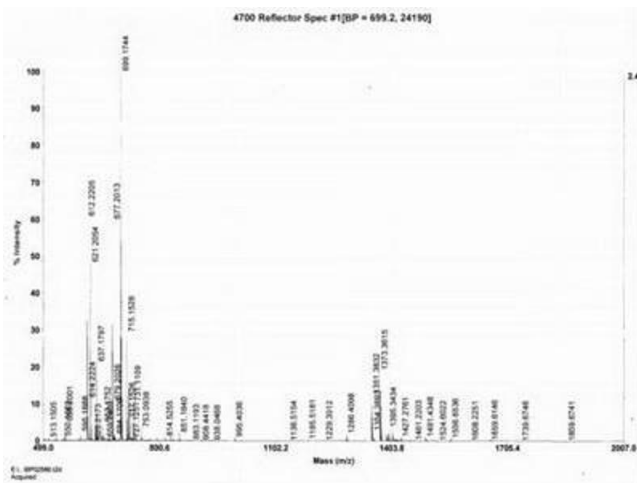


Image 2.

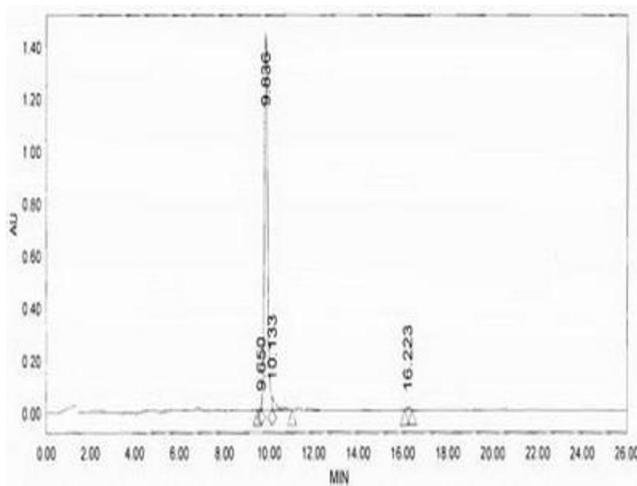


Image 3.