



[Go to Product page](#)

Datasheet for ABIN5666182

Galanin (GAL) peptide (Ovalbumin)

3 Images

Overview

Quantity:	1 mg
Target:	Galanin (GAL)
Origin:	Human
Source:	Synthetic
Purification tag / Conjugate:	This Galanin peptide is labelled with Ovalbumin.
Application:	Immunogen (Imm), SDS-PAGE (SDS), Western Blotting (WB)

Product Details

Purity:	> 90 %
---------	--------

Target Details

Target:	Galanin (GAL)
Background:	Alternative Names: GALN, GLNN, GMAP, Galanin Prepropeptide, Galanin-Message-Associated Peptide

Application Details

Application Notes:	Optimal working dilution should be determined by the investigator.
Restrictions:	For Research Use only

Handling

Format:	Lyophilized
---------	-------------

Handling

Buffer: PBS, pH 7.4.

Images

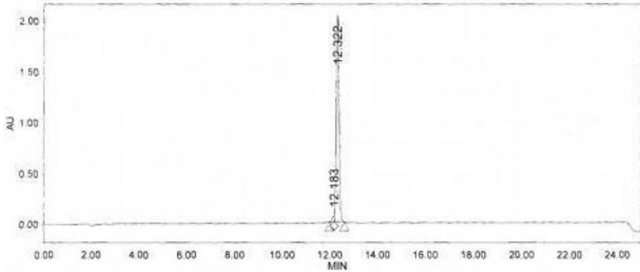


Image 1.

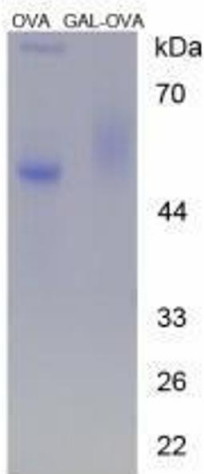


Image 2.

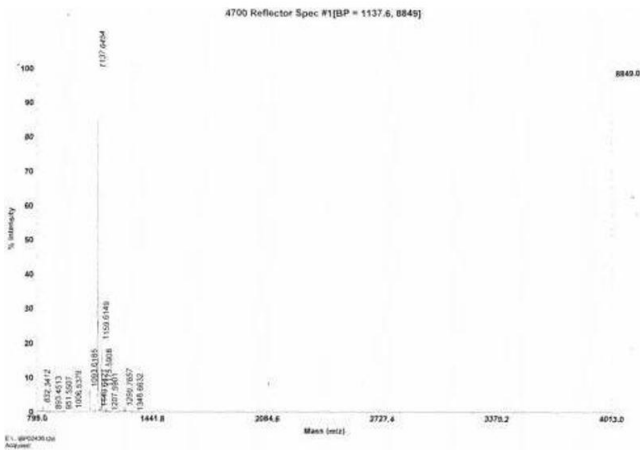


Image 3.