



[Go to Product page](#)

Datasheet for ABIN5666248

Islet Amyloid Polypeptide (IAPP) peptide (Ovalbumin)

3 Images

Overview

Quantity:	1 mg
Target:	Amylin/DAP (IAPP)
Origin:	Human
Source:	Synthetic
Purification tag / Conjugate:	This Amylin/DAP peptide is labelled with Ovalbumin.
Application:	Western Blotting (WB), Immunogen (Imm), SDS-PAGE (SDS)

Product Details

Purity: > 90 %

Target Details

Target:	Amylin/DAP (IAPP)
Background:	Alternative Names: IAP, DAP, Amylin, Insulinoma Amyloid Polypeptide, Diabetes-associated peptide
UniProt:	P10997

Application Details

Application Notes:	Optimal working dilution should be determined by the investigator.
Restrictions:	For Research Use only

Handling

Format: Lyophilized

Buffer: PBS, pH 7.4.

Images

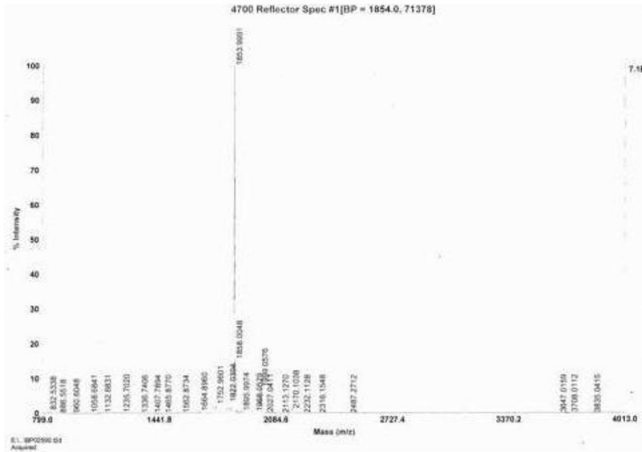


Image 1.

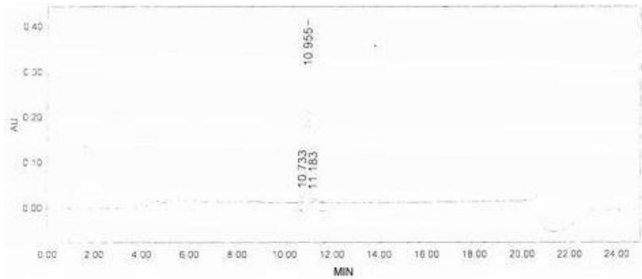


Image 2.

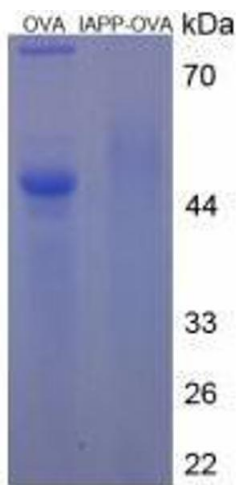


Image 3.