



[Go to Product page](#)

Datasheet for ABIN5666260

KiSS-1 Metastasis-Suppressor (KISS1) peptide (Ovalbumin)

3 Images

Overview

Quantity:	1 mg
Target:	KISS1
Origin:	Human
Source:	Synthetic
Purification tag / Conjugate:	This KISS1 peptide is labelled with Ovalbumin.
Application:	Immunogen (Imm), SDS-PAGE (SDS), Western Blotting (WB)

Product Details

Purity: >90 %

Target Details

Target:	KISS1
Background:	Alternative Names: Metastin, KiSS-1 Metastasis-Suppressor
UniProt:	Q15726

Application Details

Application Notes:	Optimal working dilution should be determined by the investigator.
Restrictions:	For Research Use only

Handling

Format: Lyophilized

Handling

Buffer: PBS, pH 7.4.

Images

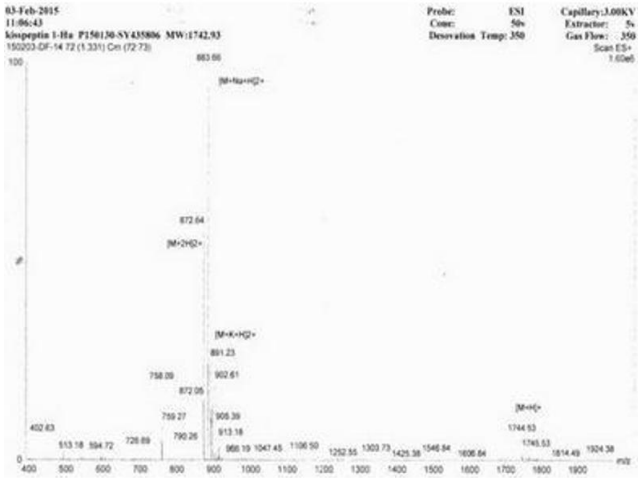


Image 1.

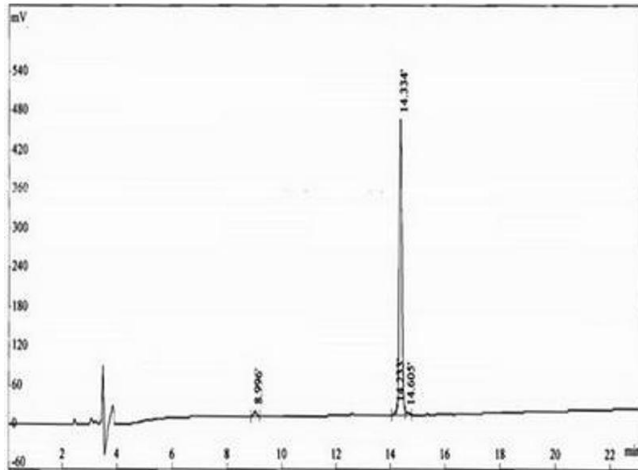


Image 2.

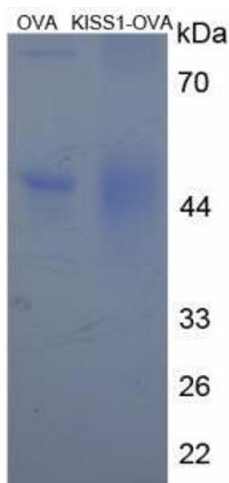


Image 3.