



[Go to Product page](#)

Datasheet for ABIN566628
anti-EPT1 antibody (AA 1-50)

2 Images

1 Publication

Overview

Quantity:	50 µL
Target:	EPT1
Binding Specificity:	AA 1-50
Reactivity:	Human
Host:	Mouse
Clonality:	Polyclonal
Conjugate:	This EPT1 antibody is un-conjugated
Application:	Western Blotting (WB), ELISA

Product Details

Purpose:	Mouse polyclonal antibody raised against a partial recombinant SELI.
Immunogen:	SELI (NP_277040, 1 a.a. ~ 50 a.a) partial recombinant protein with GST tag.
Sequence:	MAGYEYVSPE QLAGFDKYKY SAVDTNPLSL YVMHPFWNTI VKVFPTWLAP
Cross-Reactivity:	Human
Characteristics:	Antibody Reactive Against Recombinant Protein.

Target Details

Target:	EPT1
Alternative Name:	SELI (EPT1 Products)
Background:	Full Gene Name: selenoprotein I

Target Details

Synonyms: KIAA1724

Gene ID: 85465

NCBI Accession: [NM_033505](#)

Application Details

Application Notes: Optimal working dilution should be determined by the investigator.

Restrictions: For Research Use only

Handling

Format: Liquid

Buffer: 50 % glycerol

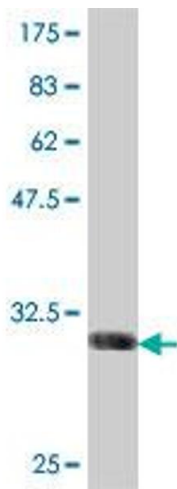
Handling Advice: Aliquot to avoid repeated freezing and thawing.

Storage: -20 °C

Storage Comment: Store at -20°C or lower. Aliquot to avoid repeated freezing and thawing.

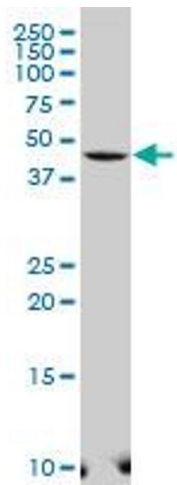
Publications

Product cited in: Schoenmakers, Agostini, Mitchell, Schoenmakers, Papp, Rajanayagam, Padidela, Ceron-Gutierrez, Doffinger, Prevosto, Luan, Montano, Lu, Castanet, Clemons, Groeneveld, Castets, Karbaschi, Aitken, Dixon et al.: "Mutations in the selenocysteine insertion sequence-binding protein 2 gene lead to a multisystem selenoprotein deficiency disorder in humans. ..." in: **The Journal of clinical investigation**, Vol. 120, Issue 12, pp. 4220-35, (2010) ([PubMed](#)).



Western Blotting

Image 1. Western Blot detection against Immunogen (31.61 kDa) .



Western Blotting

Image 2. SELI polyclonal antibody (A01), Lot # 060529JCS1 Western Blot analysis of SELI expression in HeLa .