



Datasheet for ABIN5666311  
**Orexin A (OXA) peptide (Ovalbumin)**



[Go to Product page](#)

3 Images

### Overview

Quantity:	1 mg
Target:	Orexin A (OXA)
Origin:	Mouse, Rat, Human, Pig, Sheep, Cow, Dog
Source:	Synthetic
Purification tag / Conjugate:	This Orexin A peptide is labelled with Ovalbumin.
Application:	Western Blotting (WB), Immunogen (Imm), SDS-PAGE (SDS)

### Product Details

Purity: > 90 %

### Target Details

Target:	Orexin A (OXA)
Background:	Alternative Names: Hypocretin-1

### Application Details

Application Notes:	Optimal working dilution should be determined by the investigator.
Restrictions:	For Research Use only

### Handling

Format:	Lyophilized
Buffer:	PBS, pH 7.4.

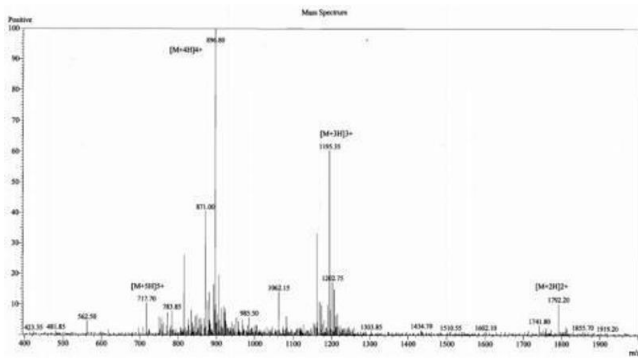


Image 1.

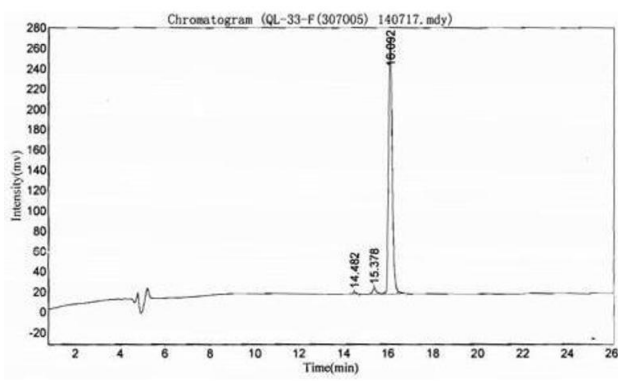


Image 2.

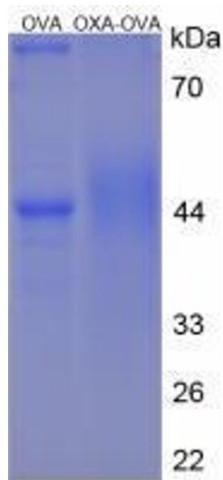


Image 3.