



[Go to Product page](#)

Datasheet for ABIN566663

anti-LDHAL6B antibody (AA 282-381)

1 Image

Overview

Quantity:	50 µL
Target:	LDHAL6B
Binding Specificity:	AA 282-381
Reactivity:	Human
Host:	Mouse
Clonality:	Polyclonal
Conjugate:	This LDHAL6B antibody is un-conjugated
Application:	Western Blotting (WB), ELISA

Product Details

Purpose:	Mouse polyclonal antibody raised against a partial recombinant LDHAL6B.
Immunogen:	LDHAL6B (NP_005497, 282 a.a. ~ 381 a.a) partial recombinant protein with GST tag.
Sequence:	EVTATAYEII KMKGYTSWAI GLSVADLTES ILKNLRRRIHP VSTITKGLYG IDEEVFLSIP CILGENGITN LIKIKLTPEE EAHLKKS AKT LWEIQNK LKL
Cross-Reactivity:	Human
Characteristics:	Antibody Reactive Against Recombinant Protein.

Target Details

Target:	LDHAL6B
Alternative Name:	LDHAL6B (LDHAL6B Products)

Target Details

Background:	Full Gene Name: lactate dehydrogenase A-like 6B Synonyms: LDHAL6,LDHL
Gene ID:	92483
NCBI Accession:	NM_033195

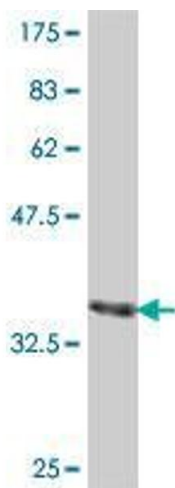
Application Details

Application Notes:	Optimal working dilution should be determined by the investigator.
Restrictions:	For Research Use only

Handling

Format:	Liquid
Buffer:	50 % glycerol
Handling Advice:	Aliquot to avoid repeated freezing and thawing.
Storage:	-20 °C
Storage Comment:	Store at -20°C or lower. Aliquot to avoid repeated freezing and thawing.

Images



Western Blotting

Image 1. Western Blot detection against Immunogen (37.11 kDa).