



[Go to Product page](#)

Datasheet for ABIN566669
anti-UBE2Q2 antibody (AA 1-110)

1 Image

Overview

Quantity:	50 µL
Target:	UBE2Q2
Binding Specificity:	AA 1-110
Reactivity:	Human
Host:	Mouse
Clonality:	Polyclonal
Conjugate:	This UBE2Q2 antibody is un-conjugated
Application:	Western Blotting (WB), ELISA

Product Details

Purpose:	Mouse polyclonal antibody raised against a partial recombinant LOC92912.
Immunogen:	LOC92912 (NP_775740, 1 a.a. ~ 110 a.a) partial recombinant protein with GST tag.
Sequence:	MSVSGLKAEL KFLASIFDKN HERFRIVSWK LDELHCQLV PQQGSPHSLP PPLTLHCNIT ESYPSSSPIW FVDSEDPNLT SVLERLEDTK NNNLLRQLK WLICELCSLY
Cross-Reactivity:	Human
Characteristics:	Antibody Reactive Against Recombinant Protein.

Target Details

Target:	UBE2Q2
Alternative Name:	UBE2Q2 (UBE2Q2 Products)

Target Details

Background:	Full Gene Name: ubiquitin-conjugating enzyme E2Q family member 2 Synonyms: DKFZp762C143
Gene ID:	92912
NCBI Accession:	NM_173469

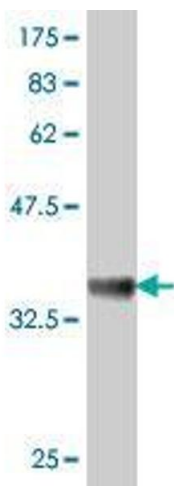
Application Details

Application Notes:	Optimal working dilution should be determined by the investigator.
Restrictions:	For Research Use only

Handling

Format:	Liquid
Buffer:	50 % glycerol
Handling Advice:	Aliquot to avoid repeated freezing and thawing.
Storage:	-20 °C
Storage Comment:	Store at -20°C or lower. Aliquot to avoid repeated freezing and thawing.

Images



Western Blotting

Image 1. Western Blot detection against Immunogen (38.21 kDa).