



[Go to Product page](#)

Datasheet for ABIN566670  
**anti-MARS2 antibody (AA 1-106)**

1 Image

Overview

Quantity:	50 µL
Target:	MARS2
Binding Specificity:	AA 1-106
Reactivity:	Human
Host:	Mouse
Clonality:	Polyclonal
Conjugate:	This MARS2 antibody is un-conjugated
Application:	ELISA, Western Blotting (WB)

Product Details

Purpose:	Mouse polyclonal antibody raised against a partial recombinant MARS2.
Immunogen:	MARS2 (NP_612404, 1 a.a. ~ 106 a.a) partial recombinant protein with GST tag.
Sequence:	MLRTSVLRLL GRTGASRLSL LEDFGPRYYSGSLSAGDDA CDVRAYFTTP IFYVNAAPHI GHLYSALLAD ALCRHRRLRG PSTAATRFST GTDEHGLKIQ QAAATA
Cross-Reactivity:	Human
Characteristics:	Antibody Reactive Against Recombinant Protein.

Target Details

Target:	MARS2
Alternative Name:	MARS2 ( <a href="#">MARS2 Products</a> )

## Target Details

Background:	Full Gene Name: methionyl-tRNA synthetase 2, mitochondrial Synonyms: MetRS,mtMetRS
Gene ID:	92935
NCBI Accession:	<a href="#">NM_138395</a>

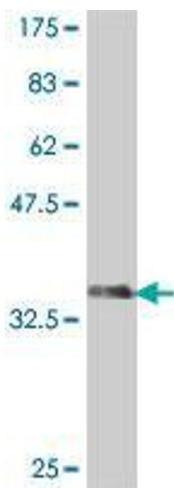
## Application Details

Application Notes:	Optimal working dilution should be determined by the investigator.
Restrictions:	For Research Use only

## Handling

Format:	Liquid
Buffer:	50 % glycerol
Handling Advice:	Aliquot to avoid repeated freezing and thawing.
Storage:	-20 °C
Storage Comment:	Store at -20°C or lower. Aliquot to avoid repeated freezing and thawing.

## Images



### Western Blotting

**Image 1.** Western Blot detection against Immunogen (37.77 kDa).