



[Go to Product page](#)

Datasheet for ABIN566687

anti-CPI-17 antibody (AA 1-147)

3 Images

Overview

| | |
|----------------------|---------------------------------------|
| Quantity: | 100 µg |
| Target: | CPI-17 (PPP1R14A) |
| Binding Specificity: | AA 1-147 |
| Reactivity: | Human |
| Host: | Mouse |
| Clonality: | Monoclonal |
| Conjugate: | This CPI-17 antibody is un-conjugated |
| Application: | Western Blotting (WB), ELISA |

Product Details

| | |
|-------------------|---|
| Purpose: | Mouse monoclonal antibody raised against a full length recombinant PPP1R14A. |
| Immunogen: | PPP1R14A (AAH21089, 1 a.a. ~ 147 a.a) full-length recombinant protein with GST tag. MW of the GST tag alone is 26 KDa. |
| Sequence: | MAAQLRGKRV LSKLQSPSRA RGPGGSPGGL QKRHARVTVK YDRRELQRRL DVEKWIDGRL EELYRGMEAD MPDEINIDEL LELESEEERS RKIQGLLKSC GKPVEDFIQE LLAKLQGLHR QPGLRQPSPS HDGSLSPQLD RARTAHP |
| Clone: | 3A7 |
| Isotype: | IgG1 |
| Cross-Reactivity: | Human |
| Characteristics: | Antibody Reactive Against Recombinant Protein. |

Target Details

| | |
|-------------------|---|
| Target: | CPI-17 (PPP1R14A) |
| Alternative Name: | PPP1R14A (PPP1R14A Products) |
| Background: | Full Gene Name: protein phosphatase 1, regulatory (inhibitor) subunit 14A Synonyms: CPI-17,CPI17,PPP1INL |
| Gene ID: | 94274 |

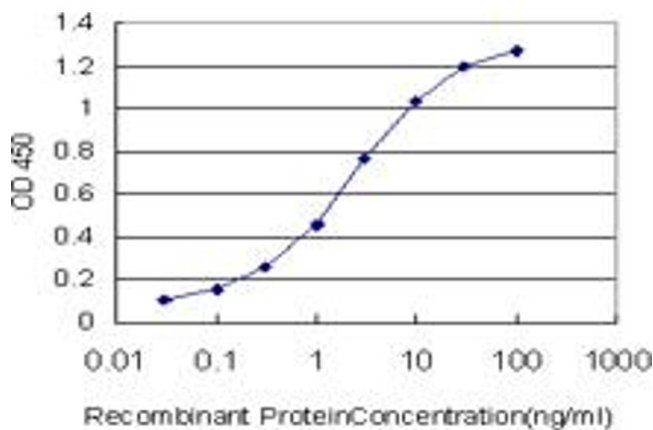
Application Details

| | |
|--------------------|--|
| Application Notes: | Optimal working dilution should be determined by the investigator. |
| Restrictions: | For Research Use only |

Handling

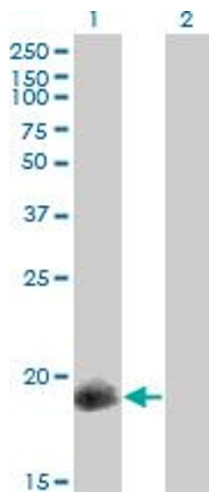
| | |
|------------------|--|
| Buffer: | In 1x PBS, pH 7.4 |
| Handling Advice: | Aliquot to avoid repeated freezing and thawing. |
| Storage: | -20 °C |
| Storage Comment: | Store at -20°C or lower. Aliquot to avoid repeated freezing and thawing. |

Images



ELISA

Image 1. Detection limit for recombinant GST tagged PPP1R14A is approximately 0.1ng/ml as a capture antibody.

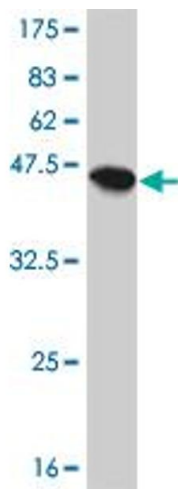


Western Blotting

Image 2. Western Blot analysis of PPP1R14A expression in transfected 293T cell line by PPP1R14A monoclonal antibody (M01), clone 3A7.

Lane 1: PPP1R14A transfected lysate(16.7 KDa).

Lane 2: Non-transfected lysate.



Western Blotting

Image 3. Western Blot detection against Immunogen (41.91 KDa).