

Datasheet for ABIN566731
anti-C1QTNF2 antibody (AA 16-285)



[Go to Product page](#)

2 Images

Overview

Quantity:	100 µg
Target:	C1QTNF2
Binding Specificity:	AA 16-285
Reactivity:	Human
Host:	Mouse
Clonality:	Monoclonal
Conjugate:	This C1QTNF2 antibody is un-conjugated
Application:	Western Blotting (WB), ELISA

Product Details

Purpose:	Mouse monoclonal antibody raised against a full length recombinant C1QTNF2.
Immunogen:	C1QTNF2 (AAH11699.1, 16 a.a. ~ 285 a.a) full-length recombinant protein with GST tag. MW of the GST tag alone is 26 KDa.
Sequence:	DPLLGAFARR DFRKGGSPQLV CSLPGPQGPP GPPGAPGPSG MMGRMGFPGK DGQDGHGDR GDSGEEGPPG RTGNRGKPGP KKGAGAIGRA GPRGPKGVNG TPGKHGTPGK KGPKGKKGEP GLPGPCSCGS GHTKSAFSVA VTksYPRERL PIKFDKILMN EGGHYNASSG KFVCGVPGIY YFTYDITLAN KHLAIGLVHN GQYRIRTFDA NTGNHVDVAG STILALKQGD EVWLQIFYSE QNGLFYDPYW TDSLFTGFLI YADQDDPNEV
Clone:	1D7-2C7
Isotype:	IgG2a
Cross-Reactivity:	Human

Product Details

Characteristics: Antibody Reactive Against Recombinant Protein.

Target Details

Target: C1QTNF2

Alternative Name: C1QTNF2 ([C1QTNF2 Products](#))

Background: Full Gene Name: C1q and tumor necrosis factor related protein 2
Synonyms: CTRP2,zacrp2

Gene ID: 114898

Application Details

Application Notes: Optimal working dilution should be determined by the investigator.

Restrictions: For Research Use only

Handling

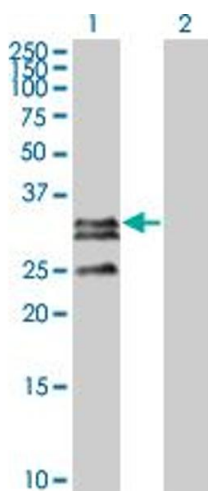
Buffer: In 1x PBS, pH 7.4

Handling Advice: Aliquot to avoid repeated freezing and thawing.

Storage: -20 °C

Storage Comment: Store at -20°C or lower. Aliquot to avoid repeated freezing and thawing.

Images

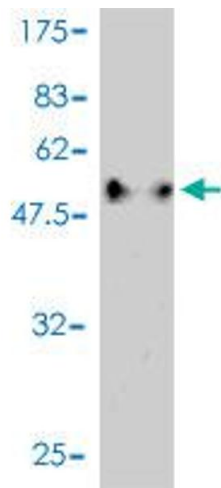


Western Blotting

Image 1. Western Blot analysis of C1QTNF2 expression in transfected 293T cell line by C1QTNF2 monoclonal antibody (M01), clone 1D7-2C7.

Lane 1: C1QTNF2 transfected lysate(32.775 KDa).

Lane 2: Non-transfected lysate.



Western Blotting

Image 2. Western Blot detection against Immunogen (55.44 kDa).