



[Go to Product page](#)

Datasheet for ABIN566742

anti-NXNL1 antibody (AA 81-190)

3 Images

Overview

Quantity:	100 µg
Target:	NXNL1
Binding Specificity:	AA 81-190
Reactivity:	Human
Host:	Mouse
Clonality:	Monoclonal
Conjugate:	This NXNL1 antibody is un-conjugated
Application:	Western Blotting (WB), ELISA

Product Details

Purpose:	Mouse monoclonal antibody raised against a partial recombinant NXNL1.
Immunogen:	NXNL1 (NP_612463, 81 a.a. ~ 190 a.a) partial recombinant protein with GST tag. MW of the GST tag alone is 26 KDa.
Sequence:	DSTEEQQDLF LKDMPPKKWLF LPFEDDLRRD LGRQFSVERL PAVVVLKPDG DVLTRDGADE IQRLGTACFA NWQEAAEVLD RNFQLPEDLE DQEPRSLTEC LRRHKYRVEK
Clone:	7H3
Isotype:	IgG2b
Cross-Reactivity:	Human
Characteristics:	Antibody Reactive Against Recombinant Protein.

Target Details

Target:	NXNL1
Alternative Name:	NXNL1 (NXNL1 Products)
Background:	Full Gene Name: nucleoredoxin-like 1 Synonyms: RDCVF, TXNL6
Gene ID:	115861
NCBI Accession:	NM_138454

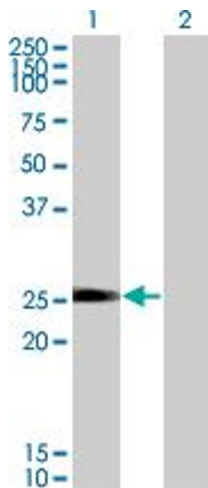
Application Details

Application Notes:	Optimal working dilution should be determined by the investigator.
Restrictions:	For Research Use only

Handling

Buffer:	In 1x PBS, pH 7.4
Handling Advice:	Aliquot to avoid repeated freezing and thawing.
Storage:	-20 °C
Storage Comment:	Store at -20°C or lower. Aliquot to avoid repeated freezing and thawing.

Images



Western Blotting

Image 1. Western Blot analysis of NXNL1 expression in transfected 293T cell line by TXNL6 monoclonal antibody (M01), clone 7H3.

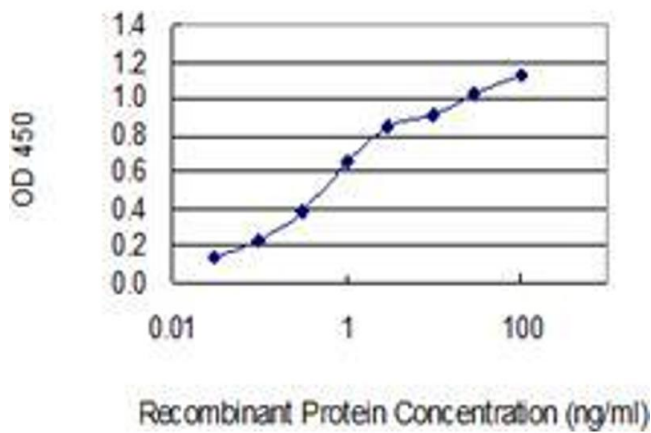
Lane 1: NXNL1 transfected lysate(23.9 kDa).

Lane 2: Non-transfected lysate.



Western Blotting

Image 2. Western Blot detection against Immunogen (37.84 KDa).



ELISA

Image 3. Detection limit for recombinant GST tagged NXNL1 is 0.03 ng/ml as a capture antibody.