



Datasheet for ABIN5667458
anti-CBP antibody (AA 1000-1100) (FITC)



[Go to Product page](#)

3 Images

Overview

| | |
|----------------------|---|
| Quantity: | 100 µg |
| Target: | CBP (CREBBP) |
| Binding Specificity: | AA 1000-1100 |
| Reactivity: | Human |
| Host: | Rabbit |
| Clonality: | Polyclonal |
| Conjugate: | This CBP antibody is conjugated to FITC |
| Application: | Western Blotting (WB), Immunohistochemistry (IHC) |

Product Details

| | |
|---------------|---|
| Immunogen: | Synthetic peptide from the mid-protein of Human CBP (aa. 1000-1100) |
| Specificity: | Detects 265 kDa. |
| Purification: | Peptide Affinity Purified |

Target Details

| | |
|-------------------|---|
| Target: | CBP (CREBBP) |
| Alternative Name: | CBP (CREBBP Products) |
| Gene ID: | 1387 |
| NCBI Accession: | NP_001073315 |
| UniProt: | Q92793 |

Target Details

Pathways: [TCR Signaling](#), [Interferon-gamma Pathway](#), [Stem Cell Maintenance](#), [Chromatin Binding](#), [Regulation of Lipid Metabolism by PPARalpha](#)

Application Details

Application Notes:

- WB (1:1000)
- IHC (1:50)
- optimal dilutions for assays should be determined by the user.

Comment: A 1:1000 dilution of ABIN5667458 was sufficient for detection of CBP in 10 µg of human HeLa cell lysates by ECL immunoblot analysis using goat anti-rabbit IgG:HRP as the secondary antibody.

Restrictions: For Research Use only

Handling

Format: Liquid

Concentration: 1 mg/mL

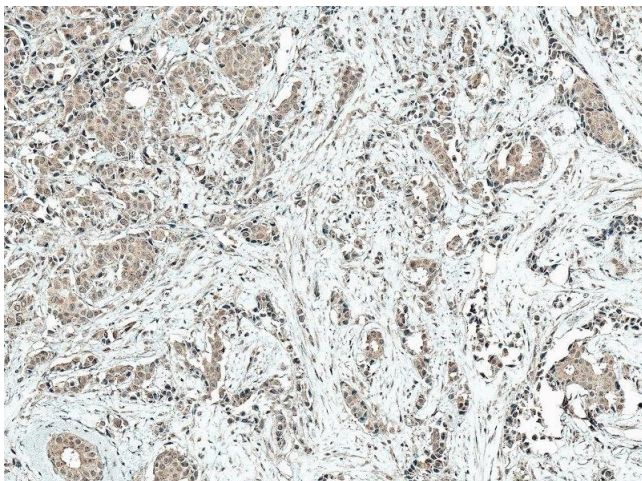
Buffer: PBS pH 7.4, 50 % glycerol, 0.09 % Sodium Azide

Preservative: Sodium azide

Precaution of Use: This product contains Sodium azide: a POISONOUS AND HAZARDOUS SUBSTANCE, which should be handled by trained staff only.

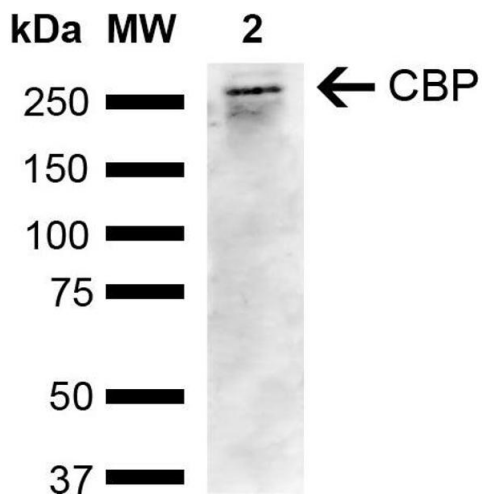
Storage: -20 °C

Images



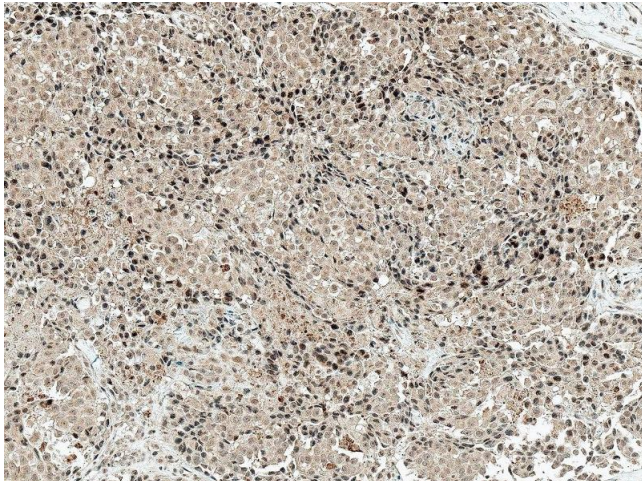
Immunohistochemistry

Image 1. Immunohistochemistry analysis using Rabbit Anti-CBP Polyclonal Antibody (ABIN5667458). Tissue: Breast Cancer. Species: Human. Fixation: Formalin Fixed Paraffin-Embedded. Primary Antibody: Rabbit Anti-CBP Polyclonal Antibody (ABIN5667458) at 1:50 for 30 min at RT. Counterstain: Hematoxylin. Magnification: 10X. HRP-DAB Detection.



Western Blotting

Image 2. Western blot analysis of Human Cervical cancer cell line (HeLa) lysate showing detection of ~265.3 kDa CBP protein using Rabbit Anti-CBP Polyclonal Antibody (ABIN5667458). Lane 1: Molecular Weight Ladder (MW). Lane 2: HeLa. Load: 10 µg. Block: 5 % Skim Milk in 1X TBST. Primary Antibody: Rabbit Anti-CBP Polyclonal Antibody (ABIN5667458) at 1:1000 for 2 hours at RT. Secondary Antibody: Goat Anti-Rabbit IgG: HRP at 1:4000 for 1 hour at RT. Color Development: ECL solution for 5 min at RT. Predicted/Observed Size: ~265.3 kDa.



Immunohistochemistry

Image 3. Immunohistochemistry analysis using Rabbit Anti-CBP Polyclonal Antibody (ABIN5667458). Tissue: Breast Cancer. Species: Human. Fixation: Formalin Fixed Paraffin-Embedded. Primary Antibody: Rabbit Anti-CBP Polyclonal Antibody (ABIN5667458) at 1:50 for 30 min at RT. Counterstain: Hematoxylin. Magnification: 10X. HRP-DAB Detection.