



[Go to Product page](#)

Datasheet for ABIN566747
anti-CMTM5 antibody (AA 1-156)

3 Images

Overview

Quantity:	100 µg
Target:	CMTM5
Binding Specificity:	AA 1-156
Reactivity:	Human
Host:	Mouse
Clonality:	Monoclonal
Conjugate:	This CMTM5 antibody is un-conjugated
Application:	ELISA, Western Blotting (WB)

Product Details

Purpose:	Mouse monoclonal antibody raised against a full length recombinant CKLFSF5.
Immunogen:	CKLFSF5 (AAH13109, 1 a.a. ~ 156 a.a) full-length recombinant protein with GST tag. MW of the GST tag alone is 26 KDa.
Sequence:	MLSARDRRDR HPEEGVVAEL QGFAVDKAFI TSHKGILLET ELALTLIIFI CFTASISAYM AAALLEFFIT LAFLFLYATQ YYQRFDRINW PCLDFLRCVS AIIIFLVVSF AAVTSRDGAA IAAVFGIIL VSIFAYDAFK IYRTEMAPGA SQGDQQ
Clone:	2G1-6B10
Isotype:	IgG1
Cross-Reactivity:	Human
Characteristics:	Antibody Reactive Against Recombinant Protein.

Target Details

Target:	CMTM5
Alternative Name:	CMTM5 (CMTM5 Products)
Background:	Full Gene Name: CKLF-like MARVEL transmembrane domain containing 5 Synonyms: CKLFSF5,FLJ37521
Gene ID:	116173

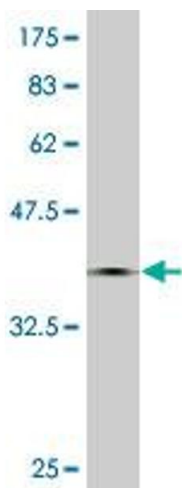
Application Details

Application Notes:	Optimal working dilution should be determined by the investigator.
Restrictions:	For Research Use only

Handling

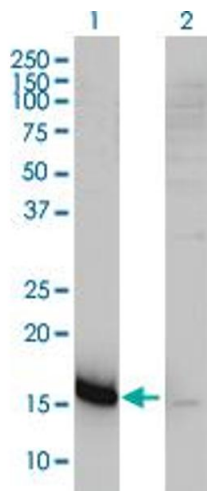
Buffer:	In 1x PBS, pH 7.4
Handling Advice:	Aliquot to avoid repeated freezing and thawing.
Storage:	-20 °C
Storage Comment:	Store at -20°C or lower. Aliquot to avoid repeated freezing and thawing.

Images



Western Blotting

Image 1. Western Blot detection against Immunogen (42.9 KDa) .

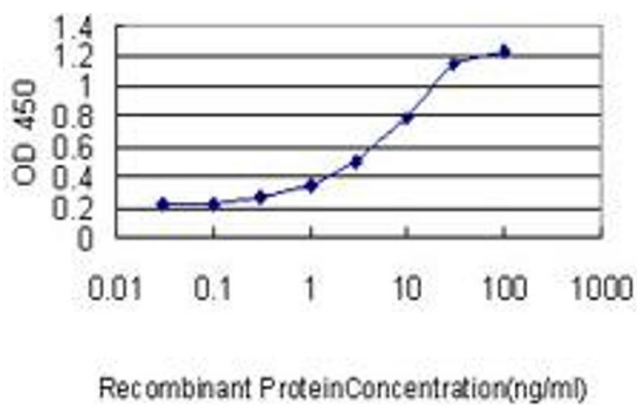


Western Blotting

Image 2. Western Blot analysis of CMTM5 expression in transfected 293T cell line by CKLFSF5 monoclonal antibody (M01), clone 2G1-6B10.

Lane 1: CMTM5 transfected lysate(17 KDa).

Lane 2: Non-transfected lysate.



ELISA

Image 3. Detection limit for recombinant GST tagged CMTM5 is approximately 0.1 ng/ml as a capture antibody.