



Datasheet for ABIN566752
anti-RPL39L antibody (AA 1-51)



[Go to Product page](#)

4 Images

Overview

Quantity:	100 µg
Target:	RPL39L
Binding Specificity:	AA 1-51
Reactivity:	Human
Host:	Mouse
Clonality:	Monoclonal
Conjugate:	This RPL39L antibody is un-conjugated
Application:	ELISA, Immunohistochemistry (Paraffin-embedded Sections) (IHC (p)), Western Blotting (WB)

Product Details

Purpose:	Mouse monoclonal antibody raised against a full length recombinant RPL39L.
Immunogen:	RPL39L (AAH12328, 1 a.a. ~ 51 a.a) full-length recombinant protein with GST tag. MW of the GST tag alone is 26 KDa.
Sequence:	MSSHKTFTIK RFLAKKQKQN RPIPQWIQMK PGSKIRYNSK RRHWRTKLG L
Clone:	4A8-1B6
Isotype:	IgG1
Cross-Reactivity:	Human
Characteristics:	Antibody Reactive Against Recombinant Protein.

Target Details

Target:	RPL39L
Alternative Name:	RPL39L (RPL39L Products)
Background:	Full Gene Name: ribosomal protein L39-like Synonyms: RPL39L1
Gene ID:	116832

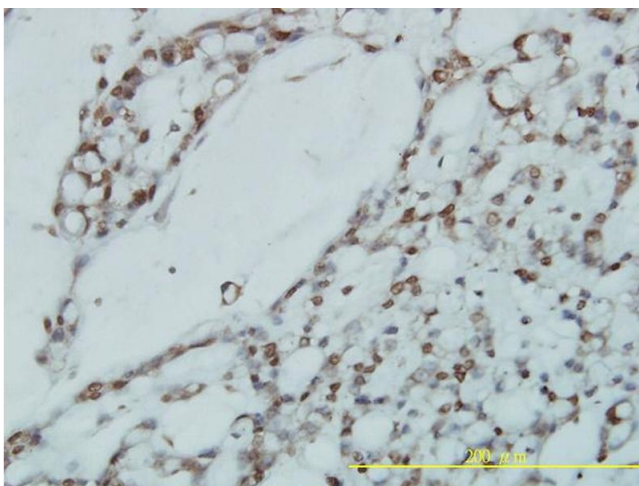
Application Details

Application Notes:	Optimal working dilution should be determined by the investigator.
Restrictions:	For Research Use only

Handling

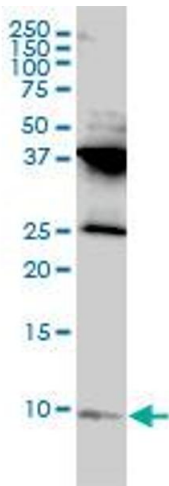
Buffer:	In 1x PBS, pH 7.4
Handling Advice:	Aliquot to avoid repeated freezing and thawing.
Storage:	-20 °C
Storage Comment:	Store at -20°C or lower. Aliquot to avoid repeated freezing and thawing.

Images



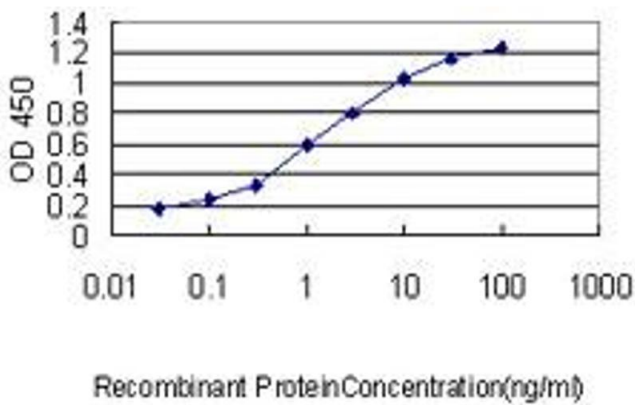
Immunostaining

Image 1. Immunoperoxidase of monoclonal antibody to RPL39L on formalin-fixed paraffin-embedded human ovary, clear cell carcinoma tissue. [antibody concentration 1 ug/ml]



Western Blotting

Image 2. RPL39L monoclonal antibody (M01), clone 4A8-1B6 Western Blot analysis of RPL39L expression in HL-60 .



ELISA

Image 3. Detection limit for recombinant GST tagged RPL39L is approximately 0.1 ng/ml as a capture antibody.

Please check the [product details page](#) for more images. Overall 4 images are available for ABIN566752.