



[Go to Product page](#)

Datasheet for ABIN5667570

anti-Tuberin antibody (AA 1-100) (Alkaline Phosphatase (AP))

2 Images

Overview

Quantity:	100 µg
Target:	Tuberin (TSC2)
Binding Specificity:	AA 1-100
Reactivity:	Human, Mouse
Host:	Rabbit
Clonality:	Polyclonal
Conjugate:	This Tuberin antibody is conjugated to Alkaline Phosphatase (AP)
Application:	Western Blotting (WB), Immunohistochemistry (IHC)

Product Details

Immunogen:	Synthetic peptide from the N-terminal of Human TSC2 (aa. 1-100)
Specificity:	Detects 200 kDa.
Purification:	Peptide Affinity Purified

Target Details

Target:	Tuberin (TSC2)
Alternative Name:	TSC2 (TSC2 Products)
Gene ID:	7249
NCBI Accession:	NP_000539
UniProt:	P49815

Target Details

Pathways: [RTK Signaling](#), [AMPK Signaling](#), [Fc-epsilon Receptor Signaling Pathway](#), [EGFR Signaling Pathway](#), [Neurotrophin Signaling Pathway](#), [Regulation of Cell Size](#), [Tube Formation](#), [Protein targeting to Nucleus](#)

Application Details

Application Notes:

- WB (1:1000)
- IHC (1:50)
- optimal dilutions for assays should be determined by the user.

Comment: A 1:1000 dilution of SPC-766 was sufficient for detection of PTEN in 15 µg of rat Liver cell lysates by ECL immunoblot analysis using goat anti-rabbit IgG:HRP as the secondary antibody.

Restrictions: For Research Use only

Handling

Format: Liquid

Concentration: 1 mg/mL

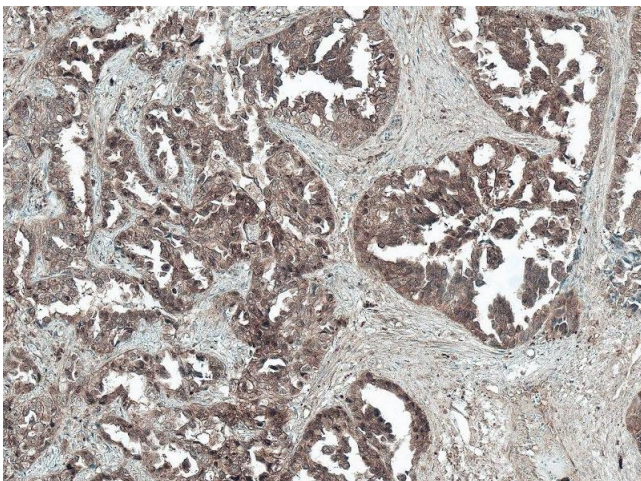
Buffer: PBS pH 7.4, 50 % glycerol, 0.09 % Sodium Azide

Preservative: Sodium azide

Precaution of Use: This product contains Sodium azide: a POISONOUS AND HAZARDOUS SUBSTANCE, which should be handled by trained staff only.

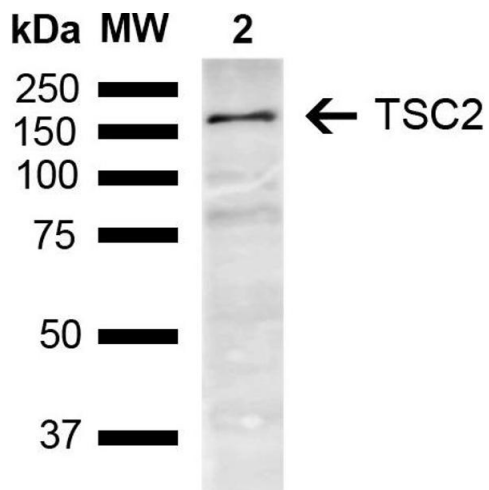
Storage: -20 °C

Images



Immunohistochemistry

Image 1. Immunohistochemistry analysis using Rabbit Anti-TSC2 Polyclonal Antibody (ABIN5667570). Tissue: Lung Cancer. Species: Human. Fixation: Formalin Fixed Paraffin-Embedded. Primary Antibody: Rabbit Anti-TSC2 Polyclonal Antibody (ABIN5667570) at 1:50 for 30 min at RT. Counterstain: Hematoxylin. Magnification: 10X. HRP-DAB Detection.



Western Blotting

Image 2. Western blot analysis of Mouse Brain showing detection of ~200.6 kDa TSC2 protein using Rabbit Anti-TSC2 Polyclonal Antibody (ABIN5667570). Lane 1: Molecular Weight Ladder (MW). Lane 2: Mouse Brain. Load: 15 µg. Block: 5 % Skim Milk in 1X TBST. Primary Antibody: Rabbit Anti-TSC2 Polyclonal Antibody (ABIN5667570) at 1:1000 for 2 hours at RT. Secondary Antibody: Goat Anti-Rabbit IgG: HRP at 1:3000 for 1 hour at RT. Color Development: ECL solution for 5 min at RT. Predicted/Observed Size: ~200.6 kDa.