

Datasheet for ABIN5667573  
**anti-Tuberin antibody (AA 1-100) (HRP)**



[Go to Product page](#)

2 Images

Overview

|                      |   |
|----------------------|---|
| Quantity:            | 100 µg  |
| Target:              | Tuberin (TSC2)                                    |
| Binding Specificity: | AA 1-100  |
| Reactivity:          | Human, Mouse                                      |
| Host:                | Rabbit  |
| Clonality:           | Polyclonal  |
| Conjugate:           | This Tuberin antibody is conjugated to HRP        |
| Application:         | Western Blotting (WB), Immunohistochemistry (IHC) |

Product Details

|               |   |
|---------------|---|
| Immunogen:    | Synthetic peptide from the N-terminal of Human TSC2 (aa. 1-100) |
| Specificity:  | Detects 200 kDa.  |
| Purification: | Peptide Affinity Purified                                       |

Target Details

|                   |  |
|-------------------|--|
| Target:           | Tuberin (TSC2)                         |
| Alternative Name: | TSC2 ( <a href="#">TSC2 Products</a> ) |
| Gene ID:          | 7249                                   |
| NCBI Accession:   | <a href="#">NP_000539</a>              |
| UniProt:          | <a href="#">P49815</a>                 |

## Target Details

---

Pathways: [RTK Signaling](#), [AMPK Signaling](#), [Fc-epsilon Receptor Signaling Pathway](#), [EGFR Signaling Pathway](#), [Neurotrophin Signaling Pathway](#), [Regulation of Cell Size](#), [Tube Formation](#), [Protein targeting to Nucleus](#)

## Application Details

---

Application Notes:

- WB (1:1000)
- IHC (1:50)
- optimal dilutions for assays should be determined by the user.

Comment: A 1:1000 dilution of ABIN5667573 was sufficient for detection of TSC2 in 15 µg of mouse Brain cell lysates by ECL immunoblot analysis using goat anti-rabbit IgG:HRP as the secondary antibody.

Restrictions: For Research Use only

## Handling

---

Format: Liquid

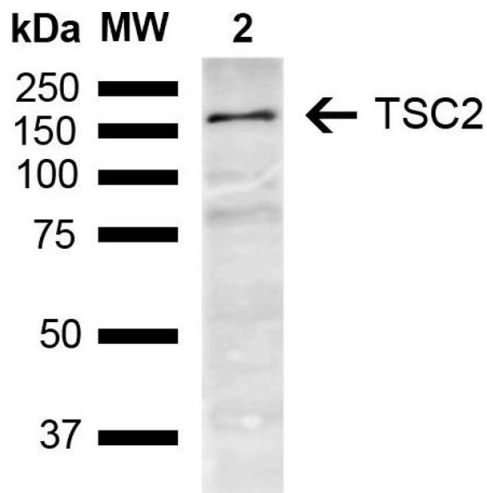
Concentration: 1 mg/mL

Buffer: PBS pH 7.4, 50 % glycerol, 0.09 % Sodium Azide

Preservative: Sodium azide

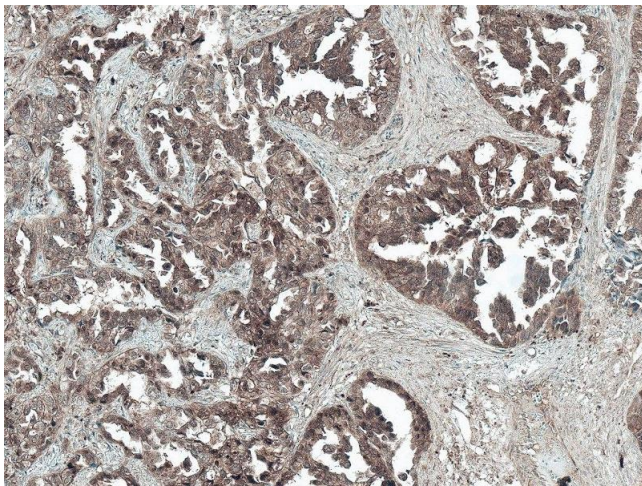
Precaution of Use: This product contains Sodium azide: a POISONOUS AND HAZARDOUS SUBSTANCE, which should be handled by trained staff only.

Storage: -20 °C



### Western Blotting

**Image 1.** Western blot analysis of Mouse Brain showing detection of ~200.6 kDa TSC2 protein using Rabbit Anti-TSC2 Polyclonal Antibody (ABIN5667573). Lane 1: Molecular Weight Ladder (MW). Lane 2: Mouse Brain. Load: 15 µg. Block: 5 % Skim Milk in 1X TBST. Primary Antibody: Rabbit Anti-TSC2 Polyclonal Antibody (ABIN5667573) at 1:1000 for 2 hours at RT. Secondary Antibody: Goat Anti-Rabbit IgG: HRP at 1:3000 for 1 hour at RT. Color Development: ECL solution for 5 min at RT. Predicted/Observed Size: ~200.6 kDa.



### Immunohistochemistry

**Image 2.** Immunohistochemistry analysis using Rabbit Anti-TSC2 Polyclonal Antibody (ABIN5667573). Tissue: Lung Cancer. Species: Human. Fixation: Formalin Fixed Paraffin-Embedded. Primary Antibody: Rabbit Anti-TSC2 Polyclonal Antibody (ABIN5667573) at 1:50 for 30 min at RT. Counterstain: Hematoxylin. Magnification: 10X. HRP-DAB Detection.