



[Go to Product page](#)

Datasheet for ABIN566758
anti-RFFL antibody (AA 2-99)

1 Image

Overview

Quantity:	50 µL
Target:	RFFL
Binding Specificity:	AA 2-99
Reactivity:	Human
Host:	Mouse
Clonality:	Polyclonal
Conjugate:	This RFFL antibody is un-conjugated
Application:	Western Blotting (WB), ELISA

Product Details

Purpose:	Mouse polyclonal antibody raised against a partial recombinant RFFL.
Immunogen:	RFFL (NP_001017368, 2 a.a. ~ 99 a.a) partial recombinant protein with GST tag.
Sequence:	WATCCNWFCL DGQPVEVPPP QGARMQAYSN PGYSSFPSPT GLEPSCKSCG AHFANTARKQ TCLDCKKNFC MTCSSQVGNG PRLCLLCQRF RATAFQRE
Cross-Reactivity:	Human
Characteristics:	Antibody Reactive Against Recombinant Protein.

Target Details

Target:	RFFL
Alternative Name:	RFFL (RFFL Products)

Target Details

Background:	Full Gene Name: ring finger and FYVE-like domain containing 1 Synonyms: RIFIFYLIN,RNF189,RNF34L
Gene ID:	117584
NCBI Accession:	NM_001017368

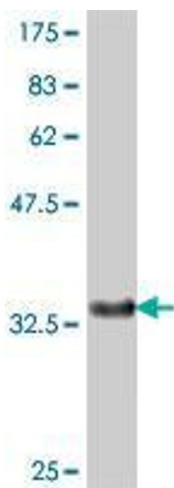
Application Details

Application Notes:	Optimal working dilution should be determined by the investigator.
Restrictions:	For Research Use only

Handling

Format:	Liquid
Buffer:	50 % glycerol
Handling Advice:	Aliquot to avoid repeated freezing and thawing.
Storage:	-20 °C
Storage Comment:	Store at -20°C or lower. Aliquot to avoid repeated freezing and thawing.

Images



Western Blotting

Image 1. Western Blot detection against Immunogen (36.89 KDa) .