



[Go to Product page](#)

Datasheet for ABIN566769
anti-LRIG3 antibody (AA 1020-1119)

1 Image

Overview

Quantity:	50 µL
Target:	LRIG3
Binding Specificity:	AA 1020-1119
Reactivity:	Human
Host:	Mouse
Clonality:	Polyclonal
Conjugate:	This LRIG3 antibody is un-conjugated
Application:	Western Blotting (WB), ELISA

Product Details

Purpose:	Mouse polyclonal antibody raised against a partial recombinant LRIG3.
Immunogen:	LRIG3 (NP_700356, 1020 a.a. ~ 1119 a.a) partial recombinant protein with GST tag.
Sequence:	LDFSANPEPA SVASSNSFMG TFGKALRRPH LDAYSSFGQP SDCQPRAFYL KAHSSPDLDS GSEEDGKERT DFQEENHICT FKQTLENYRT PNFQSYDLDT
Cross-Reactivity:	Human
Characteristics:	Antibody Reactive Against Recombinant Protein.

Target Details

Target:	LRIG3
Alternative Name:	LRIG3 (LRIG3 Products)

Target Details

Background:	Full Gene Name: leucine-rich repeats and immunoglobulin-like domains 3 Synonyms: FLJ26573,FLJ90440,KIAA3016,LIG3
Gene ID:	121227
NCBI Accession:	NM_153377

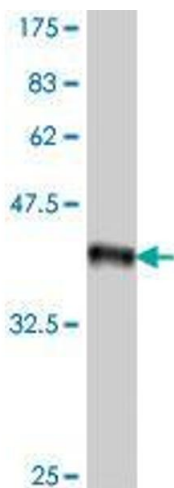
Application Details

Application Notes:	Optimal working dilution should be determined by the investigator.
Restrictions:	For Research Use only

Handling

Format:	Liquid
Buffer:	50 % glycerol
Handling Advice:	Aliquot to avoid repeated freezing and thawing.
Storage:	-20 °C
Storage Comment:	Store at -20°C or lower. Aliquot to avoid repeated freezing and thawing.

Images



Western Blotting

Image 1. Western Blot detection against Immunogen (37.11 KDa) .