



[Go to Product page](#)

Datasheet for ABIN5667723

anti-SFRP1 antibody (AA 1-100) (APC)

2 Images

Overview

Quantity:	100 µg
Target:	SFRP1
Binding Specificity:	AA 1-100
Reactivity:	Human, Rat
Host:	Rabbit
Clonality:	Polyclonal
Conjugate:	This SFRP1 antibody is conjugated to APC
Application:	Western Blotting (WB), Immunohistochemistry (IHC)

Product Details

Immunogen:	Synthetic peptide from the N-terminal of Human SFRP1 (aa. 1-100)
Specificity:	Detects 35 kDa.
Purification:	Peptide Affinity Purified

Target Details

Target:	SFRP1
Alternative Name:	SFRP1 (SFRP1 Products)
Gene ID:	6422
NCBI Accession:	NP_003003
UniProt:	Q8N474

Target Details

Pathways: [WNT Signaling](#), [Intracellular Steroid Hormone Receptor Signaling Pathway](#), [Negative Regulation of Hormone Secretion](#), [Regulation of Intracellular Steroid Hormone Receptor Signaling](#), [Stem Cell Maintenance](#), [Tube Formation](#), [Positive Regulation of fat Cell Differentiation](#)

Application Details

Application Notes:

- WB (1:1000)
- IHC (1:50)
- optimal dilutions for assays should be determined by the user.

Comment: A 1:1000 dilution of SPC-764 was sufficient for detection of LGR5 in 10 µg of human HeLa cell lysates by ECL immunoblot analysis using goat anti-rabbit IgG:HRP as the secondary antibody.

Restrictions: For Research Use only

Handling

Format: Liquid

Concentration: 1 mg/mL

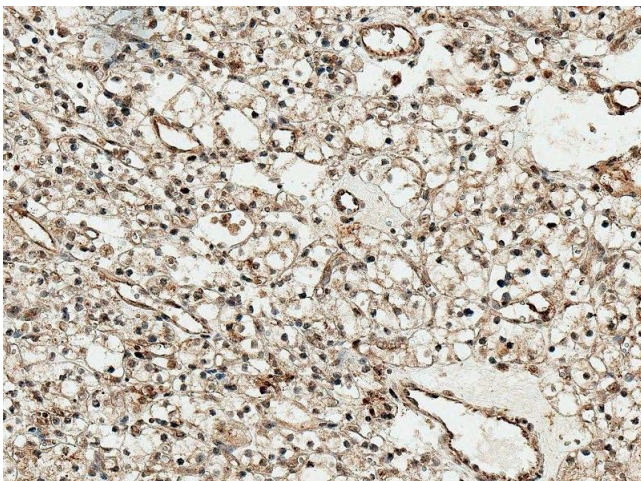
Buffer: PBS pH 7.4, 50 % glycerol, 0.09 % Sodium Azide

Preservative: Sodium azide

Precaution of Use: This product contains Sodium azide: a POISONOUS AND HAZARDOUS SUBSTANCE, which should be handled by trained staff only.

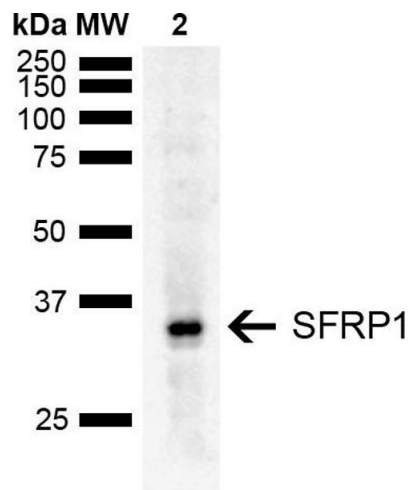
Storage: -20 °C

Images



Immunohistochemistry

Image 1. Immunohistochemistry analysis using Rabbit Anti-SFRP1 Polyclonal Antibody (ABIN5667723). Tissue: Kidney. Species: Human. Fixation: Formalin Fixed Paraffin-Embedded. Primary Antibody: Rabbit Anti-SFRP1 Polyclonal Antibody (ABIN5667723) at 1:50 for 30 min at RT. Counterstain: Hematoxylin. Magnification: 20X. HRP-DAB Detection.



Western Blotting

Image 2. Western blot analysis of Rat Liver showing detection of ~35 kDa SFRP1 protein using Rabbit Anti-SFRP1 Polyclonal Antibody (ABIN5667723). Lane 1: Molecular Weight Ladder (MW). Lane 2: Rat Liver. Load: 15 μ g. Block: 5 % Skim Milk in 1X TBST. Primary Antibody: Rabbit Anti-SFRP1 Polyclonal Antibody (ABIN5667723) at 1:1000 for 2 hours at RT. Secondary Antibody: Goat Anti-Rabbit IgG: HRP at 1:5000 for 1 hour at RT. Color Development: ECL solution for 5 min at RT. Predicted/Observed Size: ~35 kDa.