



[Go to Product page](#)

Datasheet for ABIN566777

anti-ZG16B antibody (AA 18-172)

2 Images

1 Publication

Overview

| | |
|----------------------|--------------------------------------|
| Quantity: | 100 µg |
| Target: | ZG16B |
| Binding Specificity: | AA 18-172 |
| Reactivity: | Human |
| Host: | Mouse |
| Clonality: | Monoclonal |
| Conjugate: | This ZG16B antibody is un-conjugated |
| Application: | Western Blotting (WB), ELISA |

Product Details

| | |
|-------------------|--|
| Purpose: | Mouse monoclonal antibody raised against a full length recombinant LOC124220. |
| Immunogen: | LOC124220 (AAH09722, 18 a.a. ~ 172 a.a) full-length recombinant protein with GST tag. MW of the GST tag alone is 26 KDa. |
| Sequence: | KMYGPGGGKY FSTTEDYDHE ITGLRVSVGL LLVKSQVQKL GDSWDVKLGA LGGNTQEVTL QPGEYITKVF VAFQAFLRGM VMYTSKDRYF YFGKLDGQIS SAYPSQEGQV LVGIYGQYQL LGIKSIGFEW NYPLEEPTTE PPVNLTYSAN SPVGR |
| Clone: | 4D1-1B11 |
| Isotype: | IgG1 |
| Cross-Reactivity: | Human |
| Characteristics: | Antibody Reactive Against Recombinant Protein. |

Target Details

| | |
|-------------|---|
| Target: | ZG16B |
| Abstract: | ZG16B Products |
| Background: | Full Gene Name: similar to common salivary protein 1 Synonyms: HRPE773,PRO1567 |
| Gene ID: | 124220 |

Application Details

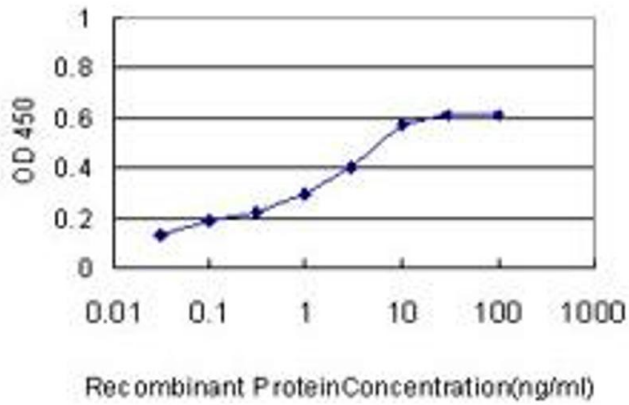
| | |
|--------------------|--|
| Application Notes: | Optimal working dilution should be determined by the investigator. |
| Restrictions: | For Research Use only |

Handling

| | |
|------------------|--|
| Buffer: | In 1x PBS, pH 7.4 |
| Handling Advice: | Aliquot to avoid repeated freezing and thawing. |
| Storage: | -20 °C |
| Storage Comment: | Store at -20°C or lower. Aliquot to avoid repeated freezing and thawing. |

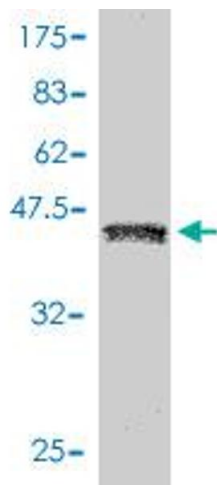
Publications

| | |
|-------------------|---|
| Product cited in: | Maynard, Arvindam, Cross, Firpo: "Potentially immunogenic proteins expressed similarly in human embryonic stem cells and induced pluripotent stem cells." in: Experimental biology and medicine (Maywood, N.J.) , Vol. 239, Issue 4, pp. 484-8, (2014) (PubMed). |
|-------------------|---|



ELISA

Image 1. Detection limit for recombinant GST tagged LOC124220 is approximately 0.03ng/ml as a capture antibody.



Western Blotting

Image 2. Western Blot detection against Immunogen (42.79 KDa) .