



[Go to Product page](#)

Datasheet for ABIN5667778

## anti-ROR1 antibody (AA 200-300) (APC)

### 2 Images

#### Overview

Quantity:	100 µg
Target:	ROR1
Binding Specificity:	AA 200-300
Reactivity:	Human, Mouse, Rat
Host:	Rabbit
Clonality:	Polyclonal
Conjugate:	This ROR1 antibody is conjugated to APC
Application:	Western Blotting (WB), Immunohistochemistry (IHC)

#### Product Details

Immunogen:	Synthetic peptide from the mid-protein of Human ROR1 (aa. 200-300)
Specificity:	Detects 43 kDa. 43 kDa is Isoform 3.
Purification:	Peptide Affinity Purified

#### Target Details

Target:	ROR1
Alternative Name:	ROR1 ( <a href="#">ROR1 Products</a> )
Gene ID:	4919
NCBI Accession:	<a href="#">NP_001077061</a>
UniProt:	<a href="#">Q01973</a>

## Target Details

Pathways: [RTK Signaling](#), [WNT Signaling](#), [Nuclear Receptor Transcription Pathway](#), [Steroid Hormone Mediated Signaling Pathway](#), [Regulation of Lipid Metabolism by PPARalpha](#)

## Application Details

Application Notes:

- WB (1:1000)
- IHC (1:50)
- optimal dilutions for assays should be determined by the user.

Comment: A 1:1000 dilution of SPC-761 was sufficient for detection of Frizzled 7 in 15 µg of mouse Brain cell lysates by ECL immunoblot analysis using goat anti-rabbit IgG:HRP as the secondary antibody.

Restrictions: For Research Use only

## Handling

Format: Liquid

Concentration: 1 mg/mL

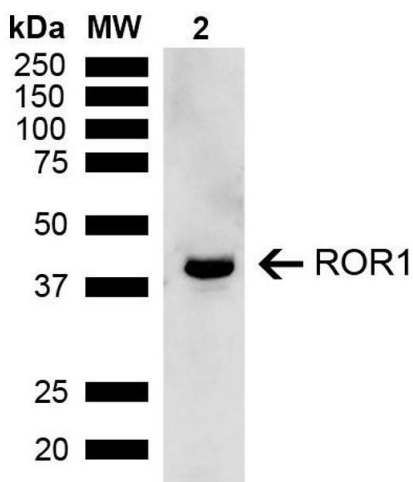
Buffer: PBS pH 7.4, 50 % glycerol, 0.09 % Sodium Azide

Preservative: Sodium azide

Precaution of Use: This product contains Sodium azide: a POISONOUS AND HAZARDOUS SUBSTANCE, which should be handled by trained staff only.

Storage: -20 °C

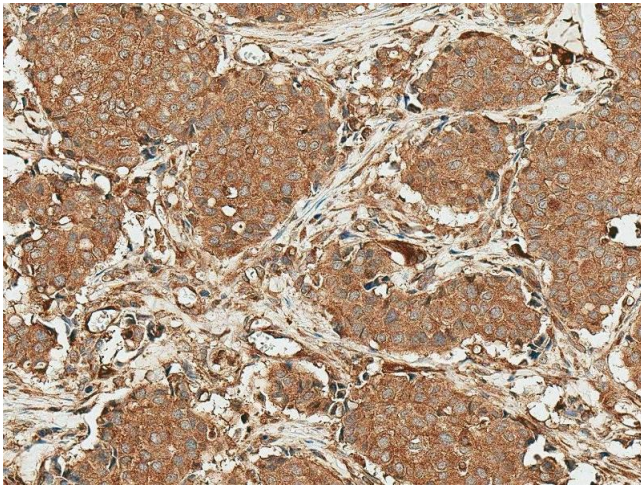
## Images



### Western Blotting

**Image 1.** Western blot analysis of Rat Kidney showing detection of ~43 kDa ROR1 protein using Rabbit Anti-ROR1 Polyclonal Antibody (ABIN5667778). Lane 1: Molecular Weight Ladder (MW). Lane 2: Rat Kidney. Load: 15 µg. Block: 5 % Skim Milk in 1X TBST. Primary Antibody: Rabbit Anti-ROR1 Polyclonal Antibody (ABIN5667778) at 1:1000 for 2 hours at RT. Secondary Antibody: Goat Anti-Rabbit IgG: HRP at 1:4000 for 1 hour at RT. Color Development: ECL solution

for 5 min at RT. Predicted/Observed Size: ~43 kDa. Other Band(s): Isoform 3.



### Immunohistochemistry

**Image 2.** Immunohistochemistry analysis using Rabbit Anti-ROR1 Polyclonal Antibody (ABIN5667778). Tissue: Breast Cancer. Species: Human. Fixation: Formalin Fixed Paraffin-Embedded. Primary Antibody: Rabbit Anti-ROR1 Polyclonal Antibody (ABIN5667778) at 1:50 for 30 min at RT. Counterstain: Hematoxylin. Magnification: 20X. HRP-DAB Detection.