



[Go to Product page](#)

Datasheet for ABIN5667802

anti-ROR1 antibody (AA 200-300) (HRP)

2 Images

Overview

| | |
|----------------------|---|
| Quantity: | 100 µg |
| Target: | ROR1 |
| Binding Specificity: | AA 200-300 |
| Reactivity: | Human, Mouse, Rat |
| Host: | Rabbit |
| Clonality: | Polyclonal |
| Conjugate: | This ROR1 antibody is conjugated to HRP |
| Application: | Western Blotting (WB), Immunohistochemistry (IHC) |

Product Details

| | |
|---------------|--|
| Immunogen: | Synthetic peptide from the mid-protein of Human ROR1 (aa. 200-300) |
| Specificity: | Detects 43 kDa. 43 kDa is Isoform 3. |
| Purification: | Peptide Affinity Purified |

Target Details

| | |
|-------------------|--|
| Target: | ROR1 |
| Alternative Name: | ROR1 (ROR1 Products) |
| Gene ID: | 4919 |
| NCBI Accession: | NP_001077061 |
| UniProt: | Q01973 |

Target Details

Pathways: [RTK Signaling](#), [WNT Signaling](#), [Nuclear Receptor Transcription Pathway](#), [Steroid Hormone Mediated Signaling Pathway](#), [Regulation of Lipid Metabolism by PPARalpha](#)

Application Details

Application Notes:

- WB (1:1000)
- IHC (1:50)
- optimal dilutions for assays should be determined by the user.

Comment: A 1:1000 dilution of ABIN5667802 was sufficient for detection of ROR1 in 15 µg of rat Kidney cell lysates by ECL immunoblot analysis using goat anti-rabbit IgG:HRP as the secondary antibody.

Restrictions: For Research Use only

Handling

Format: Liquid

Concentration: 1 mg/mL

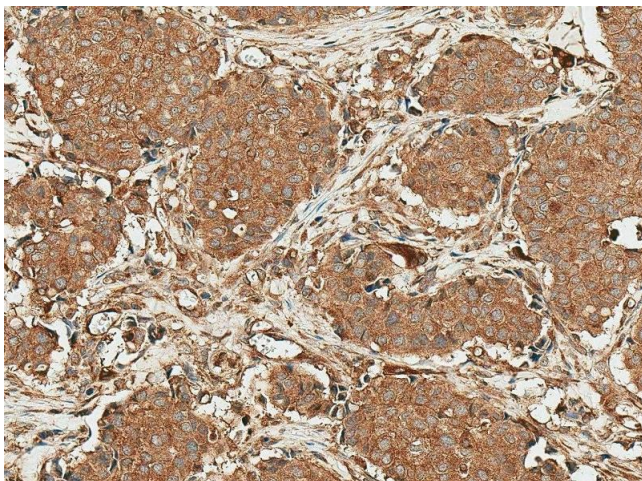
Buffer: PBS pH 7.4, 50 % glycerol, 0.09 % Sodium Azide

Preservative: Sodium azide

Precaution of Use: This product contains Sodium azide: a POISONOUS AND HAZARDOUS SUBSTANCE, which should be handled by trained staff only.

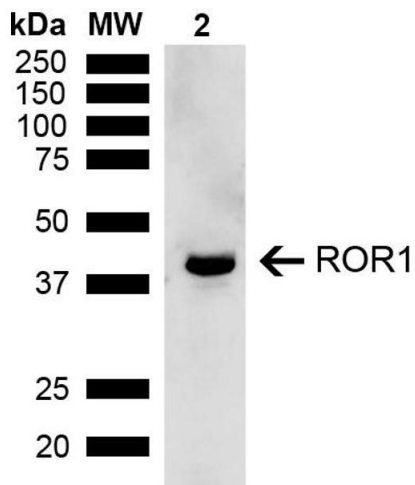
Storage: -20 °C

Images



Immunohistochemistry

Image 1. Immunohistochemistry analysis using Rabbit Anti-ROR1 Polyclonal Antibody (ABIN5667802). Tissue: Breast Cancer. Species: Human. Fixation: Formalin Fixed Paraffin-Embedded. Primary Antibody: Rabbit Anti-ROR1 Polyclonal Antibody (ABIN5667802) at 1:50 for 30 min at RT. Counterstain: Hematoxylin. Magnification: 20X. HRP-DAB Detection.



Western Blotting

Image 2. Western blot analysis of Rat Kidney showing detection of ~43 kDa ROR1 protein using Rabbit Anti-ROR1 Polyclonal Antibody (ABIN5667802). Lane 1: Molecular Weight Ladder (MW). Lane 2: Rat Kidney. Load: 15 µg. Block: 5 % Skim Milk in 1X TBST. Primary Antibody: Rabbit Anti-ROR1 Polyclonal Antibody (ABIN5667802) at 1:1000 for 2 hours at RT. Secondary Antibody: Goat Anti-Rabbit IgG: HRP at 1:4000 for 1 hour at RT. Color Development: ECL solution for 5 min at RT. Predicted/Observed Size: ~43 kDa. Other Band(s): Isoform 3.