



Datasheet for ABIN5667840

anti-WNT1 antibody (AA 270-370) (Alkaline Phosphatase (AP))



[Go to Product page](#)

2 Images

Overview

Quantity:	100 µg
Target:	WNT1
Binding Specificity:	AA 270-370
Reactivity:	Human
Host:	Rabbit
Clonality:	Polyclonal
Conjugate:	This WNT1 antibody is conjugated to Alkaline Phosphatase (AP)
Application:	Western Blotting (WB), Immunohistochemistry (IHC)

Product Details

Immunogen:	Synthetic peptide from the C-terminal of Human Wnt1 (aa. 270-370)
Specificity:	Detects 46 kDa. Band is detected at ~46 kDa, due to post translational modifications.
Purification:	Peptide Affinity Purified

Target Details

Target:	WNT1
Alternative Name:	Wnt1 (WNT1 Products)
Gene ID:	7471
NCBI Accession:	NP_005421
UniProt:	P04628

Target Details

Pathways: [WNT Signaling](#), [Dopaminergic Neurogenesis](#)

Application Details

Application Notes:

- WB (1:1000)
- IHC (1:50)
- optimal dilutions for assays should be determined by the user.

Comment: A 1:1000 dilution of SPC-758 was sufficient for detection of GSK3 beta in 15 µg of mouse Brain cell lysates by ECL immunoblot analysis using goat anti-rabbit IgG:HRP as the secondary antibody.

Restrictions: For Research Use only

Handling

Format: Liquid

Concentration: 1 mg/mL

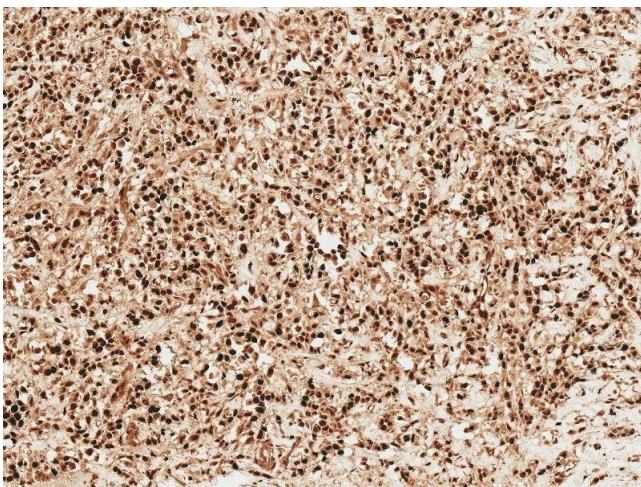
Buffer: PBS pH 7.4, 50 % glycerol, 0.09 % Sodium Azide

Preservative: Sodium azide

Precaution of Use: This product contains Sodium azide: a POISONOUS AND HAZARDOUS SUBSTANCE, which should be handled by trained staff only.

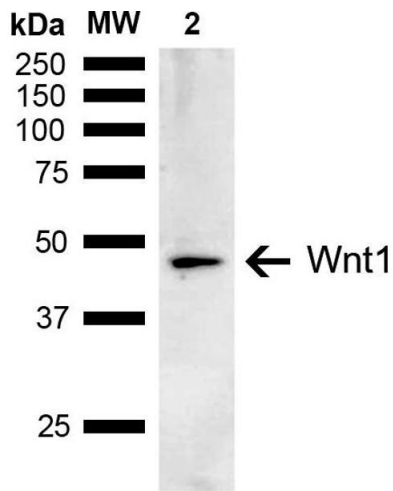
Storage: -20 °C

Images



Immunohistochemistry

Image 1. Immunohistochemistry analysis using Rabbit Anti-Wnt1 Polyclonal Antibody (ABIN5667840). Tissue: Breast Cancer. Species: Human. Fixation: Formalin Fixed Paraffin-Embedded. Primary Antibody: Rabbit Anti-Wnt1 Polyclonal Antibody (ABIN5667840) at 1:50 for 30 min at RT. Counterstain: Hematoxylin. Magnification: 10X.



Western Blotting

Image 2. Western blot analysis of Human Embryonic kidney epithelial cell line (HEK293T) lysate showing detection of ~41 kDa Wnt1 protein using Rabbit Anti-Wnt1 Polyclonal Antibody (ABIN5667840). Lane 1: Molecular Weight Ladder (MW). Lane 2: HEK293T. Load: 10 μ g. Block: 5 % Skim Milk in 1X TBST. Primary Antibody: Rabbit Anti-Wnt1 Polyclonal Antibody (ABIN5667840) at 1:1000 for 2 hours at RT. Secondary Antibody: Goat Anti-Rabbit IgG: HRP at 1:5000 for 1 hour at RT. Color Development: ECL solution for 5 min at RT. Predicted/Observed Size: ~41 kDa. Other Band(s): Band is detected at ~46 kDa, due to post translational modifications.